

Our Ref: 19109

7 May 2019

Midson
Suite 7, 33 Alexandra Street
Hunters Hill, NSW, 2110

Attention: Mr Ian Thompson

Dear Ian,

**RE: ST LUKES GRAMMAR SCHOOL – PLANNING PANEL DEFERRAL
TRAFFIC AND PARKING SURVEY RESULTS**

As requested, please find herein The Transport Planning Partnership (TPPP) traffic and parking assessment for the above proposed development.

Background

A modification to the existing development of St Luke's Grammar School (herein, St Lukes) was approved on 8 March 2018 (MOD2017/0071). The modification resulted in an approval to increase student enrolments from 884 students to 992 students.

Since then, the school has successfully implemented a new traffic management plan that has resulted in more efficient drop-off/pick-up activities resulting in an improvement to congestion in Headland Road. With the successful implementation of their traffic management plan, the school has applied to increase their student enrolments further, from 992 students to 1092 students. The increase in students relates to senior school students only. The NSW Planning Panel has reviewed the application and deferred determination to seek further information on the following:

2. A traffic and parking survey of the area in the vicinity of the school and affected by school traffic, extending over five week-days and carried out by an independent consultant agreed to by the Council and the Applicant.

On this basis, TPPP has undertaken an independent assessment of the existing traffic conditions to address Item 2 of the RFIs from the Panel.

TPP has therefore undertaken a site visit and subsequently organised traffic surveys to collect the following key information:

- a traffic count of vehicles using the drop off zone at the junior school
- the number of vehicles queued at the drop off zone at the junior school
- parking demand of on-street parking within the immediate vicinity of the school
- queuing on Headland Road.

The surveys indicated above were undertaken during the morning and afternoon school peak periods over five weekdays between Monday 8 April and Friday 12 April 2019.

Site Context and Observations

St Lukes Grammar School contains pre-school and years K to 12. It is currently approved to accommodate enrolments up to 992 students and is at present operating at full capacity. The school operating hours are as follows:

- Cottage Classes: 8:30am to 2:45pm
- Kindergarten to Year 2 (Junior School): 8:30am to 2:55pm
- Year 3 to Year 6 (Junior School): 8:30am to 3:05pm
- Year 7 to Year 12 (Senior School): 8:30am to 3:20pm
- Before and after school care provided from 7:00am to 8:30am, and 2:45pm to 6:00pm.

The junior school drop-off/pick-up activities have been noted to occur primarily along Tango Avenue where there is a drop-off/pick-up bay intended to accommodate up to 11 cars.

Senior school drop-off/pick-up activities have been observed to occur primarily on Headland Road where there is a “No Parking” restriction from 8am-9am and 3pm-4pm Monday to Friday, which accommodates two car spaces.

A “No Parking” restriction allows drivers to drop off or pick up passengers but the driver must not leave the vehicle unattended (i.e. be more than 3 metres from the closest point of the vehicle) and must complete the dropping off, or picking up of passengers within 2 minutes after stopping.

Bus stops for school buses are located along Quirk Street, Tango Avenue and Headland Road. However, observations indicate that the western bus stop on Quirk Street and bus bay on Headland Road are the most commonly used.

The site context is shown in Figure 1.

Figure 1: Site Context



Observations indicate that senior school drop-off/pick-up activities are relatively minor with most senior students catching a bus from the bus bay on Headland Road and the bus stop on Quirk Street.

Comparatively, a greater portion of the junior school is picked up or dropped off by car, via the Tango Avenue drop-off/pick-up bay. On this basis, the traffic survey scope included a count of vehicles and queue lengths at the junior school drop-off/pick-up bay as it is a critical location for traffic generation.

While drop-off/pick-up activity is relatively minor for the senior school, Headland Road is noted to have short periods of queueing (although queues clear in less than a minute) due to buses queueing back from the bus bay or stopped on Headland Road while allowing opposing vehicles to pass on those sections where road widths are too narrow to enable two-way flows. On this basis, a queueing survey on Headland Road was also undertaken.

The results of the survey data are presented below.

Survey Data Results

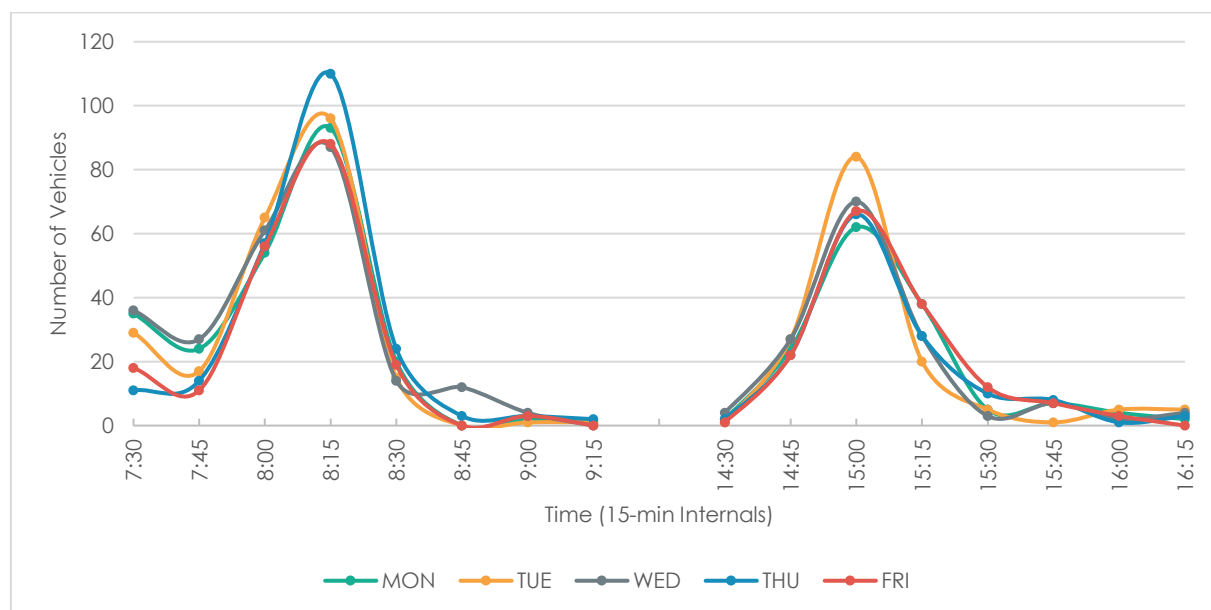
Traffic Counts

Traffic count data indicates that the Tango Avenue pick-up/drop-off bay generates the following peak volumes:

- Peak 15-minute traffic volume: 87-110 vehicles in the morning peak and 62-64 vehicles in the afternoon peak period
- Peak Hour traffic volume: 174 - 205 vehicles per hour in the morning peak and 126 - 136 vehicles per hour in the afternoon peak.

The 15-minute traffic volumes are summarised in Figure 2.

Figure 2: Tango Avenue Vehicle Count (15-min intervals)



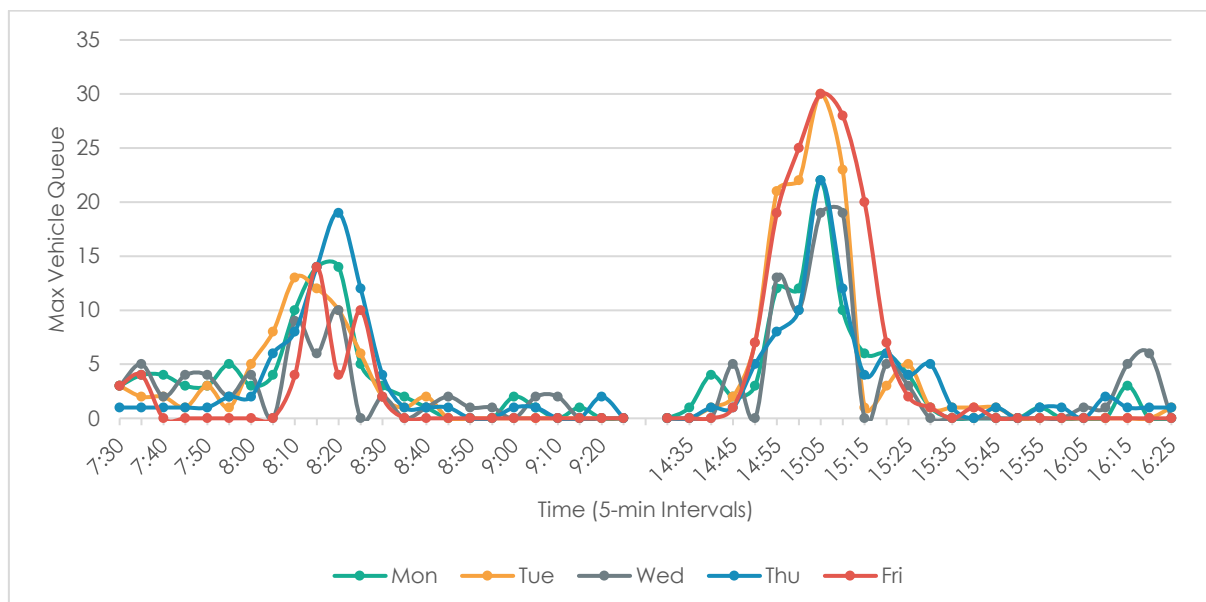
The peak traffic volumes at the site are notably generated at around 8:15am and 3pm (i.e. between the junior school finishing times). The data confirms site observations that car traffic to the site is largely generated by the junior school with the senior school generating lower volumes of traffic.

Queueing at Tango Avenue

The Tango Avenue pick-up/drop-off bay has capacity for up to 11 vehicles. Observations indicate that the queues from Tango Avenue overflow on to Quirk Street and occasionally on to Headland Street. However, delays to vehicles on the adjoining roads are noted to be small with traffic flow continuously moving as a result of traffic management measures implemented by the school at the pick-up point.

On this basis, the maximum number of vehicles queued at five-minute survey blocks has been recorded and is summarised in Figure 3.

Figure 3: Max Queue Length within 5-minute Blocks



Note: Queues are constantly moving, therefore, the above figure shows the max queue within the five minute period. However, the peak queue generally does not last the length of the five minute block.

Figure 3 indicates that peak queues from Tango Avenue occurs between 8:10am and 8:25am and between 2:55pm and 3:15pm. The afternoon 15-minute peak generates longer queues, with the survey data showing queues of up to 30 vehicles. Noting that the drop-off/pick-up bay has a capacity of 11 vehicles, this indicates that up to 19 vehicles overflow on to the adjoining roads, within a 15-minute peak period. Outside of this 15-minute peak, there are typically no queues overflowing from the drop-off/pick-up bay at Tango Avenue.

Queueing at Headland Road

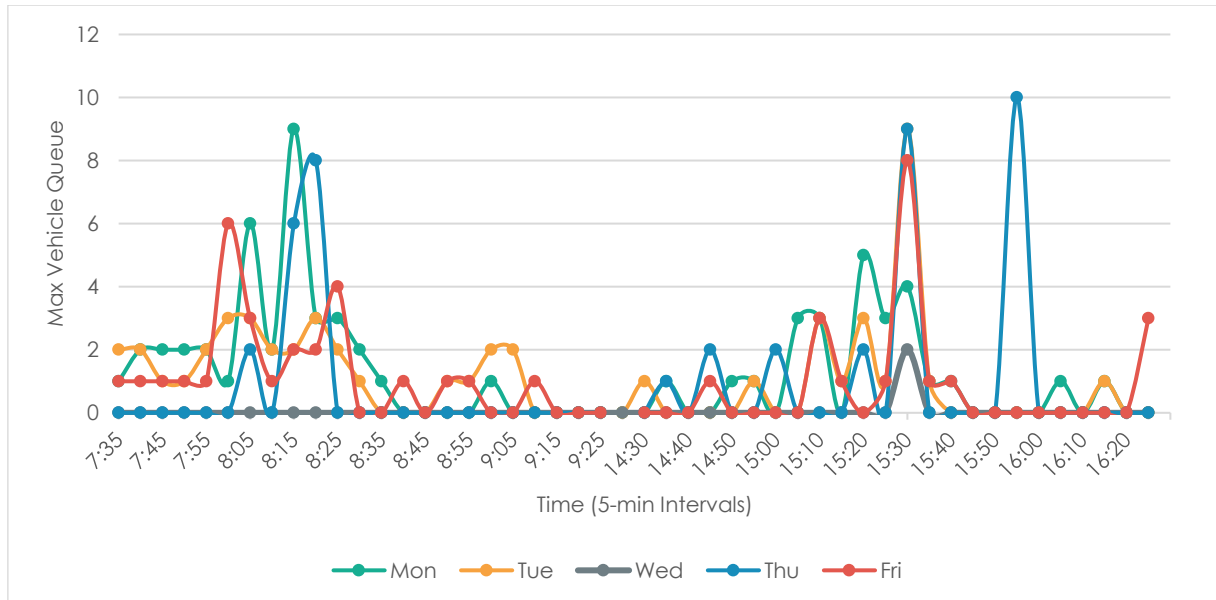
There are also occasional queues formed on Headland Road due to

- a third bus arriving to the school bus zone which has capacity for two buses and subsequently blocking general traffic while queued, or
- stopped on Headland Road while allowing opposing vehicles to pass on those sections where road widths are too narrow to enable two-way flows with a bus.

However, these instances are relatively infrequent and for short periods (queues last less than one minute).

The eastbound queues on Headland Road over the span of the survey week are shown in Figure 4.

Figure 4: Queues on Headland Rd (Eastbound)



Parking Survey

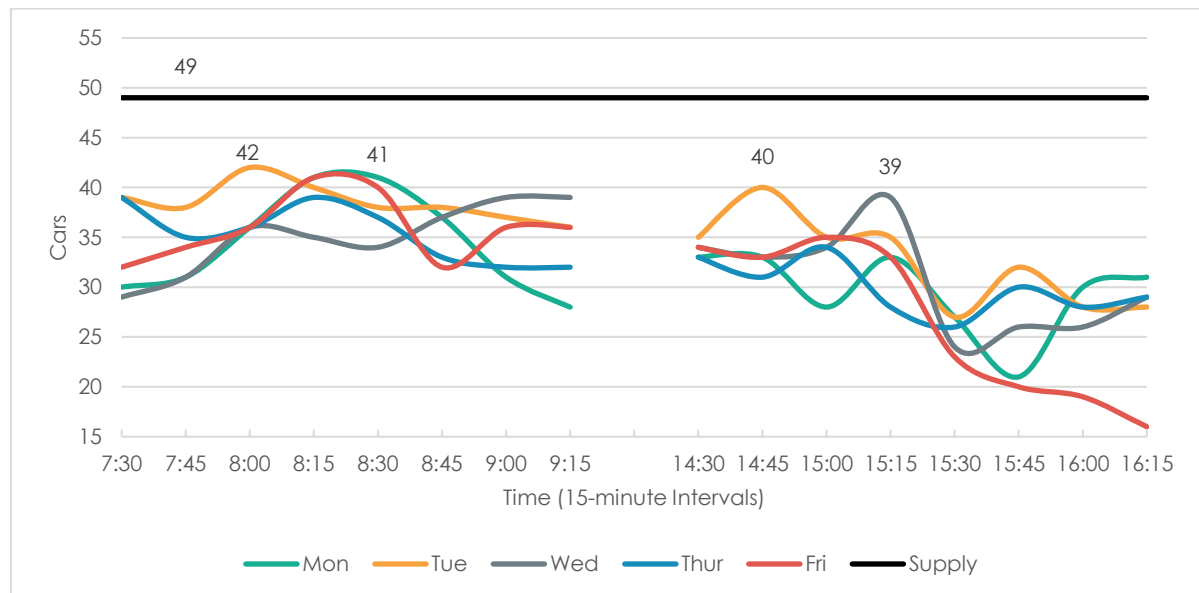
The parking demand on the roads adjoining the site has been surveyed over the area shown in Figure 5.

Figure 5: Parking Survey Area



The total supply and demand of on-street parking in the survey area (excluding bus zones and no parking restrictions) has been collated and is summarised in Figure 6.

Figure 6: Parking Demand



The survey results indicate that parking demand is generally consistent around St Lukes notwithstanding some minor increases to parking demand around school starting and finishing times. During the peak, there is an on-street occupancy of 86% (42 spaces occupied), indicating there is a limited amount of on-street parking capacity in the surrounding roads.

Notably, the parking demand generally drops after 3.30pm. The timing indicates that some of the on-street parking demand could be generated by St Lukes. However, on-site observations also indicate that a number of construction contractors from nearby construction sites (including the construction site at St Lukes) were parked on-street and would complete work around 3:30pm.

Impact of Increased Student Numbers

The proposed modification to St Lukes involves increasing student enrolment numbers at the senior school by 100 students. Based on the traffic analysis presented in this report, an increase in senior students would not result in a notable increase in traffic generation. Based on site observations of bus services and patrons, a greater number of students catch buses in the senior school compared to the junior school. In addition, there was no traffic queuing and congestion when the senior school ended.

Summary and Conclusion

Summary of Survey Data Results

Based on the above, the following summarises the key findings of the traffic surveys at St Lukes:

- Traffic generation to St Lukes is largely generated by the drop-off/pick-up area on Tango Avenue.
- During the peak, traffic generation at the Tango Avenue drop-off/pick-up bay equated to 174-205 vehicles per hour in the morning and 126-136 vehicles per hour in the afternoon. This included around 87-110 vehicles and 62-64 vehicles during the 15-minute morning and afternoon peaks respectively.
- The peak volumes to the site coincide with the junior school operating hours (i.e. 8:30 start time and 3pm finishing time).
- During the 15-minute peak period, queues exceeded the capacity of the Tango Avenue drop-off/pick-up bay, overflowing to Quirk Street and Headland Road. Outside this 15-minute peak, queues are within the available capacity of the drop-off/pick-up bay.
- Delay to vehicles during the peak 15-minute period is minimal with traffic flow continuously moving as a result of traffic management measures implemented by the school.
- Headland Road is noted to experience short periods of vehicle queueing as a result of buses queueing at the bus bay or giving way to opposing vehicles where the road width narrows on Headland Road preventing two-way flow with a bus. However, observations indicate that these instances are infrequent and minor with queues clearing in less than a minute.
- There is some minor increase in on-street parking demand around school starting and finishing hours within the immediate vicinity of St Lukes. However, there is still available parking capacity within the surrounding roads.

The survey data indicates that any existing traffic issues such as extensive queueing, occur for a short period of time (15-minutes) and is largely attributed to the junior school.

The proposed modification to increase school enrolments by 100 senior students can be accommodated within existing constraints in relation to traffic and parking.

We trust the above is to your satisfaction. Should you have any queries regarding the above or require further information, please do not hesitate to contact the undersigned on 8437 7800.

Yours sincerely,



Ken Hollyoak
Director

Encl. Attachment One – Survey Results

Attachment One

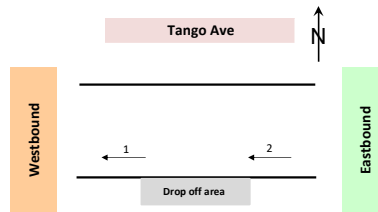
Survey Results

Job No. : N4909
Client : TTPP
Suburb : Dee Why
Location : 1. Tango Ave

Day/Date : Mon, 8th April 2019
Weather : Fine
Description : Mid-block Count
: 15 mins Data

| | Class 1 | Class 2 |
|-----------------|---------|---------|
| Classifications | Lights | Heavies |

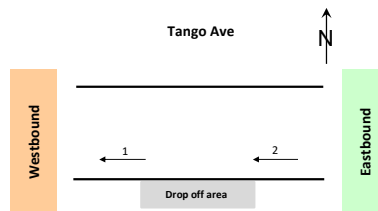
| Approach | Tango Ave | | | | | |
|------------------|------------|----------|------------|------------|----------|------------|
| Direction | 1 | | | 2 | | |
| Time Period | Lights | Heavies | Total | Lights | Heavies | Total |
| 7:30 to 7:45 | 34 | 0 | 34 | 35 | 0 | 35 |
| 7:45 to 8:00 | 26 | 0 | 26 | 24 | 0 | 24 |
| 8:00 to 8:15 | 52 | 0 | 52 | 54 | 0 | 54 |
| 8:15 to 8:30 | 94 | 0 | 94 | 93 | 0 | 93 |
| 8:30 to 8:45 | 19 | 0 | 19 | 20 | 0 | 20 |
| 8:45 to 9:00 | 0 | 0 | 0 | 0 | 0 | 0 |
| 9:00 to 9:15 | 2 | 0 | 2 | 2 | 0 | 2 |
| 9:15 to 9:30 | 1 | 0 | 1 | 1 | 0 | 1 |
| AM Totals | 228 | 0 | 228 | 229 | 0 | 229 |
| 14:30 to 14:45 | 1 | 0 | 1 | 2 | 0 | 2 |
| 14:45 to 15:00 | 20 | 0 | 20 | 24 | 0 | 24 |
| 15:00 to 15:15 | 63 | 0 | 63 | 62 | 0 | 62 |
| 15:15 to 15:30 | 41 | 0 | 41 | 38 | 0 | 38 |
| 15:30 to 15:45 | 6 | 0 | 6 | 5 | 0 | 5 |
| 15:45 to 16:00 | 0 | 0 | 0 | 7 | 0 | 7 |
| 16:00 to 16:15 | 0 | 0 | 0 | 4 | 0 | 4 |
| 16:15 to 16:30 | 1 | 0 | 1 | 2 | 0 | 2 |
| PM Totals | 132 | 0 | 132 | 144 | 0 | 144 |



Job No. : N4909
Client : TTPP
Suburb : Dee Why
Location : 1. Tango Ave

Day/Date : Mon, 8th April 2019
Weather : Fine
Description : Mid-block Count

: Hourly Summary



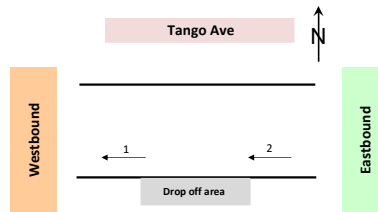
| Approach | Tango Ave | | | | | |
|------------------|------------|----------|------------|------------|----------|------------|
| Direction | 1 | | | 2 | | |
| Time Period | Lights | Heavies | Total | Lights | Heavies | Total |
| 7:30 to 8:30 | 206 | 0 | 206 | 206 | 0 | 206 |
| 7:45 to 8:45 | 191 | 0 | 191 | 191 | 0 | 191 |
| 8:00 to 9:00 | 165 | 0 | 165 | 167 | 0 | 167 |
| 8:15 to 9:15 | 115 | 0 | 115 | 115 | 0 | 115 |
| 8:30 to 9:30 | 22 | 0 | 22 | 23 | 0 | 23 |
| AM Totals | 228 | 0 | 228 | 229 | 0 | 229 |
| 14:30 to 15:30 | 125 | 0 | 125 | 126 | 0 | 126 |
| 14:45 to 15:45 | 130 | 0 | 130 | 129 | 0 | 129 |
| 15:00 to 16:00 | 110 | 0 | 110 | 112 | 0 | 112 |
| 15:15 to 16:15 | 47 | 0 | 47 | 54 | 0 | 54 |
| 15:30 to 16:30 | 7 | 0 | 7 | 18 | 0 | 18 |
| PM Totals | 132 | 0 | 132 | 144 | 0 | 144 |

Job No. : N4909
Client : TTPP
Suburb : Dee Why
Location : 1. Tango Ave

Day/Date : Tue, 9th April 2019
Weather : Fine
Description : Mid-block Count
: 15 mins Data

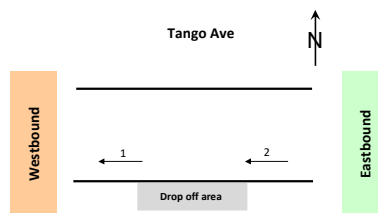
| | Class 1 | Class 2 |
|-----------------|---------|---------|
| Classifications | Lights | Heavies |

| Approach | Tango Ave | | | | | |
|------------------|------------|----------|------------|------------|----------|------------|
| Direction | 1 | | | 2 | | |
| Time Period | Lights | Heavies | Total | Lights | Heavies | Total |
| 7:30 to 7:45 | 30 | 0 | 30 | 29 | 0 | 29 |
| 7:45 to 8:00 | 18 | 0 | 18 | 17 | 0 | 17 |
| 8:00 to 8:15 | 62 | 0 | 62 | 65 | 0 | 65 |
| 8:15 to 8:30 | 98 | 0 | 98 | 96 | 0 | 96 |
| 8:30 to 8:45 | 14 | 0 | 14 | 15 | 0 | 15 |
| 8:45 to 9:00 | 0 | 0 | 0 | 0 | 0 | 0 |
| 9:00 to 9:15 | 1 | 0 | 1 | 1 | 0 | 1 |
| 9:15 to 9:30 | 0 | 0 | 0 | 1 | 0 | 1 |
| AM Totals | 223 | 0 | 223 | 224 | 0 | 224 |
| 14:30 to 14:45 | 0 | 0 | 0 | 1 | 0 | 1 |
| 14:45 to 15:00 | 24 | 0 | 24 | 27 | 0 | 27 |
| 15:00 to 15:15 | 80 | 0 | 80 | 84 | 0 | 84 |
| 15:15 to 15:30 | 22 | 0 | 22 | 20 | 0 | 20 |
| 15:30 to 15:45 | 6 | 0 | 6 | 5 | 0 | 5 |
| 15:45 to 16:00 | 1 | 0 | 1 | 1 | 0 | 1 |
| 16:00 to 16:15 | 0 | 0 | 0 | 5 | 0 | 5 |
| 16:15 to 16:30 | 0 | 0 | 0 | 5 | 0 | 5 |
| PM Totals | 133 | 0 | 133 | 148 | 0 | 148 |



Job No. : N4909
Client : TTPP
Suburb : Dee Why
Location : 1. Tango Ave

Day/Date : Tue, 9th April 2019
Weather : Fine
Description : Mid-block Count
: Hourly Summary



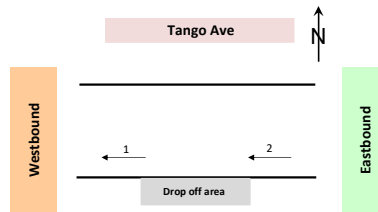
| Approach | Tango Ave | | | | | |
|------------------|------------|----------|------------|------------|----------|------------|
| Direction | 1 | | | 2 | | |
| Time Period | Lights | Heavies | Total | Lights | Heavies | Total |
| 7:30 to 8:30 | 208 | 0 | 208 | 207 | 0 | 207 |
| 7:45 to 8:45 | 192 | 0 | 192 | 193 | 0 | 193 |
| 8:00 to 9:00 | 174 | 0 | 174 | 176 | 0 | 176 |
| 8:15 to 9:15 | 113 | 0 | 113 | 112 | 0 | 112 |
| 8:30 to 9:30 | 15 | 0 | 15 | 17 | 0 | 17 |
| AM Totals | 223 | 0 | 223 | 224 | 0 | 224 |
| 14:30 to 15:30 | 126 | 0 | 126 | 132 | 0 | 132 |
| 14:45 to 15:45 | 132 | 0 | 132 | 136 | 0 | 136 |
| 15:00 to 16:00 | 109 | 0 | 109 | 110 | 0 | 110 |
| 15:15 to 16:15 | 29 | 0 | 29 | 31 | 0 | 31 |
| 15:30 to 16:30 | 7 | 0 | 7 | 16 | 0 | 16 |
| PM Totals | 133 | 0 | 133 | 148 | 0 | 148 |

Job No. : N4909
Client : TTPP
Suburb : Dee Why
Location : 1. Tango Ave

Day/Date : Wed, 10th April 2019
Weather : Fine
Description : Mid-block Count
: 15 mins Data

| | Class 1 | Class 2 |
|-----------------|---------|---------|
| Classifications | Lights | Heavies |

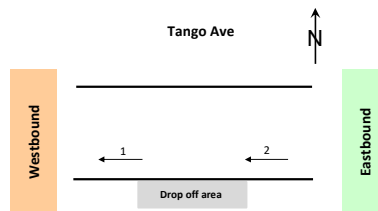
| Approach | Tango Ave | | | | | |
|------------------|------------|----------|------------|------------|----------|------------|
| Direction | 1 | | | 2 | | |
| Time Period | Lights | Heavies | Total | Lights | Heavies | Total |
| 7:30 to 7:45 | 37 | 0 | 37 | 36 | 0 | 36 |
| 7:45 to 8:00 | 23 | 0 | 23 | 27 | 0 | 27 |
| 8:00 to 8:15 | 58 | 0 | 58 | 61 | 0 | 61 |
| 8:15 to 8:30 | 83 | 0 | 83 | 87 | 0 | 87 |
| 8:30 to 8:45 | 16 | 0 | 16 | 14 | 0 | 14 |
| 8:45 to 9:00 | 10 | 0 | 10 | 12 | 0 | 12 |
| 9:00 to 9:15 | 3 | 0 | 3 | 4 | 0 | 4 |
| 9:15 to 9:30 | 2 | 0 | 2 | 0 | 0 | 0 |
| AM Totals | 232 | 0 | 232 | 241 | 0 | 241 |
| 14:30 to 14:45 | 0 | 0 | 0 | 4 | 0 | 4 |
| 14:45 to 15:00 | 23 | 0 | 23 | 27 | 0 | 27 |
| 15:00 to 15:15 | 73 | 0 | 73 | 70 | 0 | 70 |
| 15:15 to 15:30 | 30 | 0 | 30 | 28 | 0 | 28 |
| 15:30 to 15:45 | 3 | 0 | 3 | 3 | 0 | 3 |
| 15:45 to 16:00 | 0 | 0 | 0 | 7 | 0 | 7 |
| 16:00 to 16:15 | 0 | 0 | 0 | 2 | 0 | 2 |
| 16:15 to 16:30 | 7 | 0 | 7 | 4 | 0 | 4 |
| PM Totals | 136 | 0 | 136 | 145 | 0 | 145 |



Job No. : N4909
Client : TTPP
Suburb : Dee Why
Location : 1. Tango Ave

Day/Date : Wed, 10th April 2019
Weather : Fine
Description : Mid-block Count

: Hourly Summary



| Approach | Tango Ave | | | | | |
|------------------|------------|----------|------------|------------|----------|------------|
| Direction | 1 | | | 2 | | |
| Time Period | Lights | Heavies | Total | Lights | Heavies | Total |
| 7:30 to 8:30 | 201 | 0 | 201 | 211 | 0 | 211 |
| 7:45 to 8:45 | 180 | 0 | 180 | 189 | 0 | 189 |
| 8:00 to 9:00 | 167 | 0 | 167 | 174 | 0 | 174 |
| 8:15 to 9:15 | 112 | 0 | 112 | 117 | 0 | 117 |
| 8:30 to 9:30 | 31 | 0 | 31 | 30 | 0 | 30 |
| AM Totals | 232 | 0 | 232 | 241 | 0 | 241 |
| 14:30 to 15:30 | 126 | 0 | 126 | 129 | 0 | 129 |
| 14:45 to 15:45 | 129 | 0 | 129 | 128 | 0 | 128 |
| 15:00 to 16:00 | 106 | 0 | 106 | 108 | 0 | 108 |
| 15:15 to 16:15 | 33 | 0 | 33 | 40 | 0 | 40 |
| 15:30 to 16:30 | 10 | 0 | 10 | 16 | 0 | 16 |
| PM Totals | 136 | 0 | 136 | 145 | 0 | 145 |

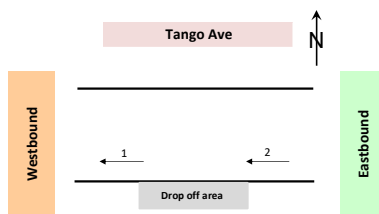
Job No. : N4909
Client : TTPP
Suburb : Dee Why
Location : 1. Tango Ave

Day/Date : Thu, 11th April 2019
Weather : Fine
Description : Mid-block Count
: 15 mins Data

Classifications

| Class 1 | Class 2 |
|---------|---------|
| Lights | Heavies |

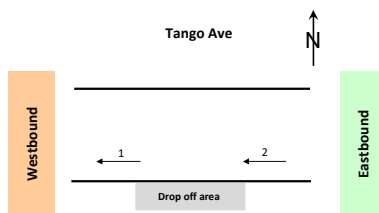
| Approach | Tango Ave | | | | | |
|------------------|------------|----------|------------|------------|----------|------------|
| Direction | 1 | | | 2 | | |
| Time Period | Lights | Heavies | Total | Lights | Heavies | Total |
| 7:30 to 7:45 | 10 | 0 | 10 | 11 | 0 | 11 |
| 7:45 to 8:00 | 12 | 0 | 12 | 14 | 0 | 14 |
| 8:00 to 8:15 | 53 | 0 | 53 | 57 | 0 | 57 |
| 8:15 to 8:30 | 112 | 0 | 112 | 110 | 0 | 110 |
| 8:30 to 8:45 | 28 | 0 | 28 | 24 | 0 | 24 |
| 8:45 to 9:00 | 3 | 0 | 3 | 3 | 0 | 3 |
| 9:00 to 9:15 | 2 | 0 | 2 | 3 | 0 | 3 |
| 9:15 to 9:30 | 2 | 0 | 2 | 2 | 0 | 2 |
| AM Totals | 222 | 0 | 222 | 224 | 0 | 224 |
| 14:30 to 14:45 | 2 | 0 | 2 | 2 | 0 | 2 |
| 14:45 to 15:00 | 16 | 0 | 16 | 22 | 0 | 22 |
| 15:00 to 15:15 | 67 | 0 | 67 | 66 | 0 | 66 |
| 15:15 to 15:30 | 31 | 0 | 31 | 28 | 0 | 28 |
| 15:30 to 15:45 | 8 | 0 | 8 | 10 | 0 | 10 |
| 15:45 to 16:00 | 3 | 0 | 3 | 8 | 0 | 8 |
| 16:00 to 16:15 | 1 | 0 | 1 | 1 | 0 | 1 |
| 16:15 to 16:30 | 7 | 0 | 7 | 3 | 0 | 3 |
| PM Totals | 135 | 0 | 135 | 140 | 0 | 140 |



Job No. : N4909
Client : TTPP
Suburb : Dee Why
Location : 1. Tango Ave

Day/Date : Thu, 11th April 2019
Weather : Fine
Description : Mid-block Count

: Hourly Summary



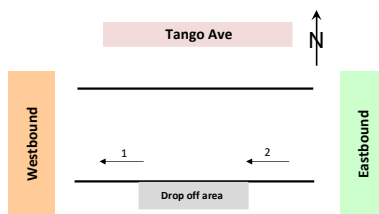
| Approach | Tango Ave | | | | | |
|------------------|------------|----------|------------|------------|----------|------------|
| Direction | 1 | | | 2 | | |
| Time Period | Lights | Heavies | Total | Lights | Heavies | Total |
| 7:30 to 8:30 | 187 | 0 | 187 | 192 | 0 | 192 |
| 7:45 to 8:45 | 205 | 0 | 205 | 205 | 0 | 205 |
| 8:00 to 9:00 | 196 | 0 | 196 | 194 | 0 | 194 |
| 8:15 to 9:15 | 145 | 0 | 145 | 140 | 0 | 140 |
| 8:30 to 9:30 | 35 | 0 | 35 | 32 | 0 | 32 |
| AM Totals | 222 | 0 | 222 | 224 | 0 | 224 |
| 14:30 to 15:30 | 116 | 0 | 116 | 118 | 0 | 118 |
| 14:45 to 15:45 | 122 | 0 | 122 | 126 | 0 | 126 |
| 15:00 to 16:00 | 109 | 0 | 109 | 112 | 0 | 112 |
| 15:15 to 16:15 | 43 | 0 | 43 | 47 | 0 | 47 |
| 15:30 to 16:30 | 19 | 0 | 19 | 22 | 0 | 22 |
| PM Totals | 135 | 0 | 135 | 140 | 0 | 140 |

Job No. : N4909
Client : TTPP
Suburb : Dee Why
Location : 1. Tango Ave

Day/Date : Fri, 12th April 2019
Weather : Fine
Description : Mid-block Count
: 15 mins Data

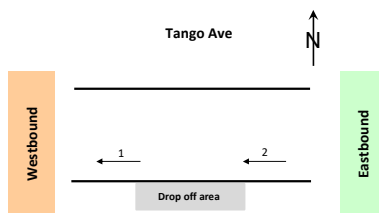
| | Class 1 | Class 2 |
|-----------------|---------|---------|
| Classifications | Lights | Heavies |

| Approach | Tango Ave | | | | | |
|------------------|------------|----------|------------|------------|----------|------------|
| Direction | 1 | | | 2 | | |
| Time Period | Lights | Heavies | Total | Lights | Heavies | Total |
| 7:30 to 7:45 | 14 | 0 | 14 | 18 | 0 | 18 |
| 7:45 to 8:00 | 8 | 0 | 8 | 10 | 1 | 11 |
| 8:00 to 8:15 | 52 | 0 | 52 | 56 | 0 | 56 |
| 8:15 to 8:30 | 88 | 0 | 88 | 88 | 0 | 88 |
| 8:30 to 8:45 | 21 | 0 | 21 | 19 | 0 | 19 |
| 8:45 to 9:00 | 1 | 0 | 1 | 0 | 0 | 0 |
| 9:00 to 9:15 | 1 | 0 | 1 | 3 | 0 | 3 |
| 9:15 to 9:30 | 0 | 0 | 0 | 0 | 0 | 0 |
| AM Totals | 185 | 0 | 185 | 194 | 1 | 195 |
| 14:30 to 14:45 | 0 | 0 | 0 | 1 | 0 | 1 |
| 14:45 to 15:00 | 16 | 0 | 16 | 22 | 0 | 22 |
| 15:00 to 15:15 | 68 | 0 | 68 | 67 | 0 | 67 |
| 15:15 to 15:30 | 36 | 0 | 36 | 38 | 0 | 38 |
| 15:30 to 15:45 | 10 | 0 | 10 | 12 | 0 | 12 |
| 15:45 to 16:00 | 3 | 0 | 3 | 7 | 0 | 7 |
| 16:00 to 16:15 | 1 | 0 | 1 | 3 | 0 | 3 |
| 16:15 to 16:30 | 0 | 0 | 0 | 0 | 0 | 0 |
| PM Totals | 134 | 0 | 134 | 150 | 0 | 150 |



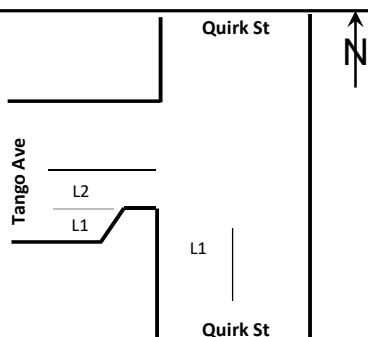
Job No. : N4909
Client : TTPP
Suburb : Dee Why
Location : 1. Tango Ave

Day/Date : Fri, 12th April 2019
Weather : Fine
Description : Mid-block Count
: Hourly Summary



| Approach | Tango Ave | | | | | |
|------------------|------------|----------|------------|------------|----------|------------|
| Direction | 1 | | | 2 | | |
| Time Period | Lights | Heavies | Total | Lights | Heavies | Total |
| 7:30 to 8:30 | 162 | 0 | 162 | 172 | 1 | 173 |
| 7:45 to 8:45 | 169 | 0 | 169 | 173 | 1 | 174 |
| 8:00 to 9:00 | 162 | 0 | 162 | 163 | 0 | 163 |
| 8:15 to 9:15 | 111 | 0 | 111 | 110 | 0 | 110 |
| 8:30 to 9:30 | 23 | 0 | 23 | 22 | 0 | 22 |
| AM Totals | 185 | 0 | 185 | 194 | 1 | 195 |
| 14:30 to 15:30 | 120 | 0 | 120 | 128 | 0 | 128 |
| 14:45 to 15:45 | 130 | 0 | 130 | 139 | 0 | 139 |
| 15:00 to 16:00 | 117 | 0 | 117 | 124 | 0 | 124 |
| 15:15 to 16:15 | 50 | 0 | 50 | 60 | 0 | 60 |
| 15:30 to 16:30 | 14 | 0 | 14 | 22 | 0 | 22 |
| PM Totals | 134 | 0 | 134 | 150 | 0 | 150 |

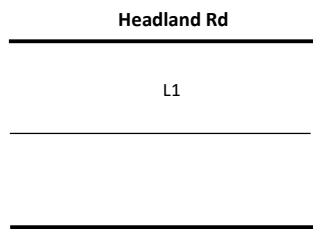
Client TTPP
Location 1. Tango Ave Drop off Zone
Date Mon, 8th April 2019
Survey Time 7:30-09:30 & 14:30-16:30 (4hours)
Description Queue Length Surveys



| AM | South Leg (Quirk St) | West Leg (Tango Ave) | |
|--------------|-------------------------|-------------------------|--------|
| | Lane 1 | Lane 1 | Lane 2 |
| 7:30 to 7:35 | 0 | 3 | 0 |
| 7:35 to 7:40 | 0 | 4 | 0 |
| 7:40 to 7:45 | 0 | 4 | 0 |
| 7:45 to 7:50 | 0 | 3 | 0 |
| 7:50 to 7:55 | 0 | 2 | 0 |
| 7:55 to 8:00 | 0 | 5 | 0 |
| 8:00 to 8:05 | 0 | 3 | 0 |
| 8:05 to 8:10 | 0 | 4 | 0 |
| 8:10 to 8:15 | 1 | 6 | 0 |
| 8:15 to 8:20 | 3 | 8 | 0 |
| 8:20 to 8:25 | 3 | 9 | 0 |
| 8:25 to 8:30 | 1 | 4 | 0 |
| 8:30 to 8:35 | 0 | 3 | 0 |
| 8:35 to 8:40 | 0 | 2 | 0 |
| 8:40 to 8:45 | 0 | 1 | 0 |
| 8:45 to 8:50 | 0 | 0 | 0 |
| 8:50 to 8:55 | 0 | 0 | 0 |
| 8:55 to 9:00 | 0 | 0 | 0 |
| 9:00 to 9:05 | 0 | 2 | 0 |
| 9:05 to 9:10 | 0 | 1 | 0 |
| 9:10 to 9:15 | 0 | 0 | 0 |
| 9:15 to 9:20 | 0 | 1 | 0 |
| 9:20 to 9:25 | 0 | 0 | 0 |
| 9:25 to 9:30 | 0 | 0 | 0 |
| MAX | 3 | 9 | 0 |
| MIN | 0 | 0 | 0 |

| PM | South Leg (Quirk St) | West Leg (Tango Ave) | |
|----------------|-------------------------|-------------------------|--------|
| | Lane 1 | Lane 1 | Lane 2 |
| 14:30 to 14:35 | 0 | 0 | 0 |
| 14:35 to 14:40 | 0 | 1 | 0 |
| 14:40 to 14:45 | 0 | 4 | 0 |
| 14:45 to 14:50 | 0 | 2 | 0 |
| 14:50 to 14:55 | 0 | 3 | 0 |
| 14:55 to 15:00 | 1 | 10 | 0 |
| 15:00 to 15:05 | 5 | 5 | 0 |
| 15:05 to 15:10 | 6 | 8 | 0 |
| 15:10 to 15:15 | 0 | 8 | 0 |
| 15:15 to 15:20 | 0 | 6 | 0 |
| 15:20 to 15:25 | 0 | 6 | 0 |
| 15:25 to 15:30 | 0 | 4 | 0 |
| 15:30 to 15:35 | 0 | 1 | 0 |
| 15:35 to 15:40 | 0 | 0 | 0 |
| 15:40 to 15:45 | 0 | 0 | 0 |
| 15:45 to 15:50 | 0 | 0 | 0 |
| 15:50 to 15:55 | 0 | 0 | 0 |
| 15:55 to 16:00 | 0 | 0 | 0 |
| 16:00 to 16:05 | 0 | 0 | 0 |
| 16:05 to 16:10 | 0 | 0 | 0 |
| 16:10 to 16:15 | 0 | 0 | 0 |
| 16:15 to 16:20 | 0 | 3 | 0 |
| 16:20 to 16:25 | 0 | 0 | 0 |
| 16:25 to 16:30 | 0 | 0 | 0 |
| MAX | 6 | 10 | 0 |
| MIN | 0 | 0 | 0 |

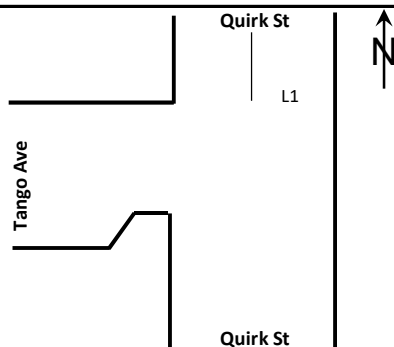
Client TTPP
Location 2. Headland Drop off Zone
Date Mon, 8th April 2019
Survey Time 7:30-09:30 & 14:30-16:30 (4hours)
Description Queue Length Surveys



| AM | Headland Rd | |
|--------------|-------------|--|
| | Lane 1 | |
| 7:30 to 7:35 | 1 | |
| 7:35 to 7:40 | 1 | |
| 7:40 to 7:45 | 2 | |
| 7:45 to 7:50 | 2 | |
| 7:50 to 7:55 | 2 | |
| 7:55 to 8:00 | 2 | |
| 8:00 to 8:05 | 1 | |
| 8:05 to 8:10 | 6 | |
| 8:10 to 8:15 | 2 | |
| 8:15 to 8:20 | 9 | |
| 8:20 to 8:25 | 3 | |
| 8:25 to 8:30 | 3 | |
| 8:30 to 8:35 | 2 | |
| 8:35 to 8:40 | 1 | |
| 8:40 to 8:45 | 0 | |
| 8:45 to 8:50 | 0 | |
| 8:50 to 8:55 | 0 | |
| 8:55 to 9:00 | 0 | |
| 9:00 to 9:05 | 1 | |
| 9:05 to 9:10 | 0 | |
| 9:10 to 9:15 | 0 | |
| 9:15 to 9:20 | 0 | |
| 9:20 to 9:25 | 0 | |
| 9:25 to 9:30 | 0 | |
| MAX | 9 | |
| MIN | 0 | |

| PM | Headland Rd | |
|----------------|-------------|--|
| | Lane 1 | |
| 14:30 to 14:35 | 0 | |
| 14:35 to 14:40 | 1 | |
| 14:40 to 14:45 | 0 | |
| 14:45 to 14:50 | 0 | |
| 14:50 to 14:55 | 1 | |
| 14:55 to 15:00 | 1 | |
| 15:00 to 15:05 | 0 | |
| 15:05 to 15:10 | 3 | |
| 15:10 to 15:15 | 3 | |
| 15:15 to 15:20 | 0 | |
| 15:20 to 15:25 | 5 | |
| 15:25 to 15:30 | 3 | |
| 15:30 to 15:35 | 4 | |
| 15:35 to 15:40 | 1 | |
| 15:40 to 15:45 | 1 | |
| 15:45 to 15:50 | 0 | |
| 15:50 to 15:55 | 0 | |
| 15:55 to 16:00 | 0 | |
| 16:00 to 16:05 | 0 | |
| 16:05 to 16:10 | 1 | |
| 16:10 to 16:15 | 0 | |
| 16:15 to 16:20 | 1 | |
| 16:20 to 16:25 | 0 | |
| 16:25 to 16:30 | 0 | |
| MAX | 5 | |
| MIN | 0 | |

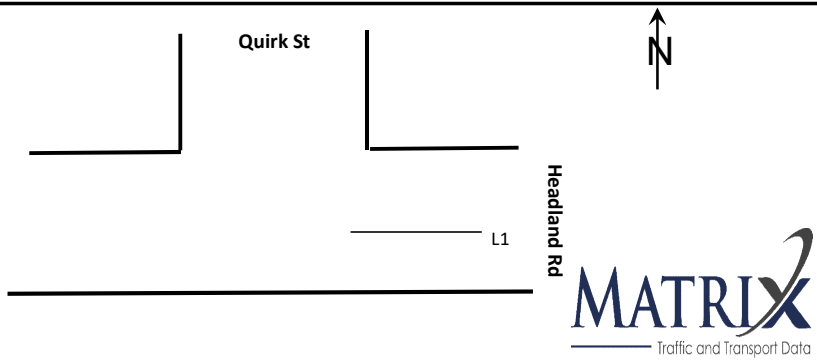
Client TTPP
Location 3. Quirk St
Date Mon, 8th April 2019
Survey Time 7:30-09:30 & 14:30-16:30 (4hours)
Description Queue Length Surveys



| AM | North Leg (Quirk St) | |
|--------------|-------------------------|--|
| | Lane 1 | |
| 7:30 to 7:35 | 0 | |
| 7:35 to 7:40 | 0 | |
| 7:40 to 7:45 | 0 | |
| 7:45 to 7:50 | 0 | |
| 7:50 to 7:55 | 1 | |
| 7:55 to 8:00 | 0 | |
| 8:00 to 8:05 | 0 | |
| 8:05 to 8:10 | 0 | |
| 8:10 to 8:15 | 3 | |
| 8:15 to 8:20 | 3 | |
| 8:20 to 8:25 | 2 | |
| 8:25 to 8:30 | 0 | |
| 8:30 to 8:35 | 0 | |
| 8:35 to 8:40 | 0 | |
| 8:40 to 8:45 | 0 | |
| 8:45 to 8:50 | 0 | |
| 8:50 to 8:55 | 0 | |
| 8:55 to 9:00 | 0 | |
| 9:00 to 9:05 | 0 | |
| 9:05 to 9:10 | 0 | |
| 9:10 to 9:15 | 0 | |
| 9:15 to 9:20 | 0 | |
| 9:20 to 9:25 | 0 | |
| 9:25 to 9:30 | 0 | |
| MAX | 3 | |
| MIN | 0 | |

| PM | North Leg (Quirk St) | |
|----------------|-------------------------|--|
| | Lane 1 | |
| 14:30 to 14:35 | 0 | |
| 14:35 to 14:40 | 0 | |
| 14:40 to 14:45 | 0 | |
| 14:45 to 14:50 | 0 | |
| 14:50 to 14:55 | 0 | |
| 14:55 to 15:00 | 1 | |
| 15:00 to 15:05 | 0 | |
| 15:05 to 15:10 | 8 | |
| 15:10 to 15:15 | 1 | |
| 15:15 to 15:20 | 0 | |
| 15:20 to 15:25 | 0 | |
| 15:25 to 15:30 | 0 | |
| 15:30 to 15:35 | 0 | |
| 15:35 to 15:40 | 0 | |
| 15:40 to 15:45 | 0 | |
| 15:45 to 15:50 | 0 | |
| 15:50 to 15:55 | 0 | |
| 15:55 to 16:00 | 1 | |
| 16:00 to 16:05 | 0 | |
| 16:05 to 16:10 | 0 | |
| 16:10 to 16:15 | 0 | |
| 16:15 to 16:20 | 0 | |
| 16:20 to 16:25 | 0 | |
| 16:25 to 16:30 | 0 | |
| MAX | 8 | |
| MIN | 0 | |

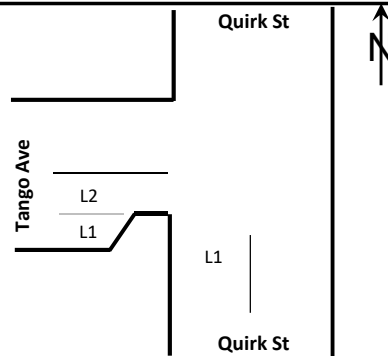
Client TTPP
Location 4. Headland Rd
Date Mon, 8th April 2019
Survey Time 7:30-09:30 & 14:30-16:30 (4hours)
Description Queue Length Surveys



| AM | East Leg (Headland Rd) | |
|--------------|---------------------------|--|
| | Lane 1 | |
| 7:30 to 7:35 | 0 | |
| 7:35 to 7:40 | 0 | |
| 7:40 to 7:45 | 0 | |
| 7:45 to 7:50 | 0 | |
| 7:50 to 7:55 | 0 | |
| 7:55 to 8:00 | 0 | |
| 8:00 to 8:05 | 0 | |
| 8:05 to 8:10 | 0 | |
| 8:10 to 8:15 | 0 | |
| 8:15 to 8:20 | 0 | |
| 8:20 to 8:25 | 0 | |
| 8:25 to 8:30 | 0 | |
| 8:30 to 8:35 | 0 | |
| 8:35 to 8:40 | 0 | |
| 8:40 to 8:45 | 0 | |
| 8:45 to 8:50 | 0 | |
| 8:50 to 8:55 | 0 | |
| 8:55 to 9:00 | 0 | |
| 9:00 to 9:05 | 0 | |
| 9:05 to 9:10 | 0 | |
| 9:10 to 9:15 | 0 | |
| 9:15 to 9:20 | 0 | |
| 9:20 to 9:25 | 0 | |
| 9:25 to 9:30 | 0 | |
| MAX | 0 | |
| MIN | 0 | |

| PM | East Leg (Headland Rd) | |
|----------------|---------------------------|--|
| | Lane 1 | |
| 14:30 to 14:35 | 0 | |
| 14:35 to 14:40 | 0 | |
| 14:40 to 14:45 | 0 | |
| 14:45 to 14:50 | 0 | |
| 14:50 to 14:55 | 0 | |
| 14:55 to 15:00 | 0 | |
| 15:00 to 15:05 | 2 | |
| 15:05 to 15:10 | 0 | |
| 15:10 to 15:15 | 1 | |
| 15:15 to 15:20 | 0 | |
| 15:20 to 15:25 | 0 | |
| 15:25 to 15:30 | 0 | |
| 15:30 to 15:35 | 0 | |
| 15:35 to 15:40 | 0 | |
| 15:40 to 15:45 | 0 | |
| 15:45 to 15:50 | 0 | |
| 15:50 to 15:55 | 0 | |
| 15:55 to 16:00 | 0 | |
| 16:00 to 16:05 | 0 | |
| 16:05 to 16:10 | 0 | |
| 16:10 to 16:15 | 0 | |
| 16:15 to 16:20 | 0 | |
| 16:20 to 16:25 | 0 | |
| 16:25 to 16:30 | 0 | |
| MAX | 2 | |
| MIN | 0 | |

Client TTPP
Location 1. Tango Ave Drop off Zone
Date Tue, 9th April 2019
Survey Time 7:30-09:30 & 14:30-16:30 (4hours)
Description Queue Length Surveys



| AM | South Leg (Quirk St) | | West Leg (Tango Ave) | |
|--------------|-------------------------|--|-------------------------|--------|
| | Lane 1 | | Lane 1 | Lane 2 |
| 7:30 to 7:35 | 0 | | 3 | 0 |
| 7:35 to 7:40 | 0 | | 2 | 0 |
| 7:40 to 7:45 | 0 | | 1 | 0 |
| 7:45 to 7:50 | 0 | | 1 | 0 |
| 7:50 to 7:55 | 3 | | 0 | 0 |
| 7:55 to 8:00 | 0 | | 1 | 0 |
| 8:00 to 8:05 | 0 | | 3 | 0 |
| 8:05 to 8:10 | 2 | | 4 | 0 |
| 8:10 to 8:15 | 7 | | 5 | 0 |
| 8:15 to 8:20 | 3 | | 5 | 0 |
| 8:20 to 8:25 | 4 | | 4 | 0 |
| 8:25 to 8:30 | 0 | | 6 | 0 |
| 8:30 to 8:35 | 0 | | 1 | 0 |
| 8:35 to 8:40 | 0 | | 1 | 0 |
| 8:40 to 8:45 | 0 | | 0 | 0 |
| 8:45 to 8:50 | 0 | | 0 | 0 |
| 8:50 to 8:55 | 0 | | 0 | 0 |
| 8:55 to 9:00 | 0 | | 0 | 0 |
| 9:00 to 9:05 | 0 | | 0 | 0 |
| 9:05 to 9:10 | 0 | | 0 | 0 |
| 9:10 to 9:15 | 0 | | 0 | 0 |
| 9:15 to 9:20 | 0 | | 0 | 0 |
| 9:20 to 9:25 | 0 | | 0 | 0 |
| 9:25 to 9:30 | 0 | | 0 | 0 |
| MAX | 7 | | 6 | 0 |
| MIN | 0 | | 0 | 0 |

| PM | South Leg (Quirk St) | | West Leg (Tango Ave) | |
|----------------|-------------------------|--|-------------------------|--------|
| | Lane 1 | | Lane 1 | Lane 2 |
| 14:30 to 14:35 | 0 | | 0 | 0 |
| 14:35 to 14:40 | 0 | | 0 | 0 |
| 14:40 to 14:45 | 1 | | 0 | 0 |
| 14:45 to 14:50 | 1 | | 1 | 0 |
| 14:50 to 14:55 | 1 | | 3 | 0 |
| 14:55 to 15:00 | 2 | | 3 | 0 |
| 15:00 to 15:05 | 4 | | 5 | 0 |
| 15:05 to 15:10 | 3 | | 4 | 0 |
| 15:10 to 15:15 | 1 | | 5 | 0 |
| 15:15 to 15:20 | 0 | | 1 | 0 |
| 15:20 to 15:25 | 0 | | 1 | 0 |
| 15:25 to 15:30 | 2 | | 1 | 0 |
| 15:30 to 15:35 | 0 | | 1 | 0 |
| 15:35 to 15:40 | 0 | | 1 | 0 |
| 15:40 to 15:45 | 0 | | 1 | 0 |
| 15:45 to 15:50 | 0 | | 1 | 0 |
| 15:50 to 15:55 | 0 | | 0 | 0 |
| 15:55 to 16:00 | 0 | | 0 | 0 |
| 16:00 to 16:05 | 0 | | 0 | 0 |
| 16:05 to 16:10 | 0 | | 0 | 0 |
| 16:10 to 16:15 | 0 | | 0 | 0 |
| 16:15 to 16:20 | 0 | | 0 | 0 |
| 16:20 to 16:25 | 0 | | 0 | 0 |
| 16:25 to 16:30 | 0 | | 1 | 0 |
| MAX | 4 | | 5 | 0 |
| MIN | 0 | | 0 | 0 |

Client TTPP
Location 2. Headland Drop off Zone
Date Tue, 9th April 2019
Survey Time 7:30-09:30 & 14:30-16:30 (4hours)
Description Queue Length Surveys

Headland Rd



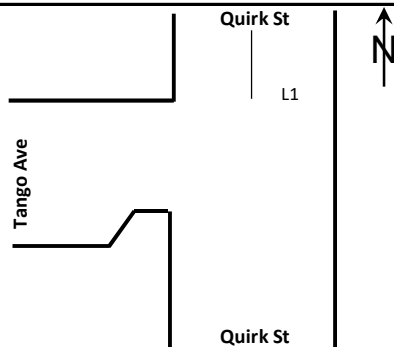
L1



| AM | Headland Rd | |
|--------------|-------------|--|
| | Lane 1 | |
| 7:30 to 7:35 | 3 | |
| 7:35 to 7:40 | 2 | |
| 7:40 to 7:45 | 2 | |
| 7:45 to 7:50 | 1 | |
| 7:50 to 7:55 | 1 | |
| 7:55 to 8:00 | 2 | |
| 8:00 to 8:05 | 3 | |
| 8:05 to 8:10 | 3 | |
| 8:10 to 8:15 | 2 | |
| 8:15 to 8:20 | 2 | |
| 8:20 to 8:25 | 3 | |
| 8:25 to 8:30 | 2 | |
| 8:30 to 8:35 | 1 | |
| 8:35 to 8:40 | 0 | |
| 8:40 to 8:45 | 0 | |
| 8:45 to 8:50 | 0 | |
| 8:50 to 8:55 | 1 | |
| 8:55 to 9:00 | 1 | |
| 9:00 to 9:05 | 2 | |
| 9:05 to 9:10 | 2 | |
| 9:10 to 9:15 | 0 | |
| 9:15 to 9:20 | 0 | |
| 9:20 to 9:25 | 0 | |
| 9:25 to 9:30 | 0 | |
| MAX | 3 | |
| MIN | 0 | |

| PM | Headland Rd | |
|----------------|-------------|--|
| | Lane 1 | |
| 14:30 to 14:35 | 1 | |
| 14:35 to 14:40 | 0 | |
| 14:40 to 14:45 | 0 | |
| 14:45 to 14:50 | 0 | |
| 14:50 to 14:55 | 0 | |
| 14:55 to 15:00 | 1 | |
| 15:00 to 15:05 | 0 | |
| 15:05 to 15:10 | 0 | |
| 15:10 to 15:15 | 3 | |
| 15:15 to 15:20 | 1 | |
| 15:20 to 15:25 | 3 | |
| 15:25 to 15:30 | 1 | |
| 15:30 to 15:35 | 9 | |
| 15:35 to 15:40 | 1 | |
| 15:40 to 15:45 | 0 | |
| 15:45 to 15:50 | 0 | |
| 15:50 to 15:55 | 0 | |
| 15:55 to 16:00 | 0 | |
| 16:00 to 16:05 | 0 | |
| 16:05 to 16:10 | 0 | |
| 16:10 to 16:15 | 0 | |
| 16:15 to 16:20 | 1 | |
| 16:20 to 16:25 | 0 | |
| 16:25 to 16:30 | 0 | |
| MAX | 9 | |
| MIN | 0 | |

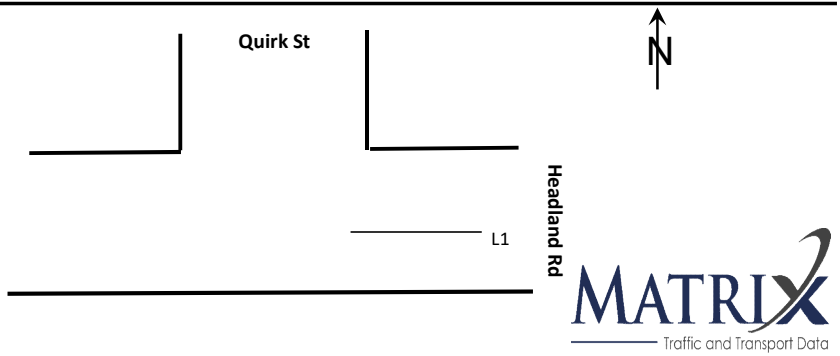
Client TTPP
Location 3. Quirk St
Date Tue, 9th April 2019
Survey Time 7:30-09:30 & 14:30-16:30 (4hours)
Description Queue Length Surveys



| AM | North Leg (Quirk St) | |
|--------------|-------------------------|--|
| | Lane 1 | |
| 7:30 to 7:35 | 0 | |
| 7:35 to 7:40 | 0 | |
| 7:40 to 7:45 | 1 | |
| 7:45 to 7:50 | 0 | |
| 7:50 to 7:55 | 0 | |
| 7:55 to 8:00 | 0 | |
| 8:00 to 8:05 | 0 | |
| 8:05 to 8:10 | 2 | |
| 8:10 to 8:15 | 1 | |
| 8:15 to 8:20 | 4 | |
| 8:20 to 8:25 | 1 | |
| 8:25 to 8:30 | 0 | |
| 8:30 to 8:35 | 0 | |
| 8:35 to 8:40 | 0 | |
| 8:40 to 8:45 | 0 | |
| 8:45 to 8:50 | 0 | |
| 8:50 to 8:55 | 0 | |
| 8:55 to 9:00 | 0 | |
| 9:00 to 9:05 | 0 | |
| 9:05 to 9:10 | 0 | |
| 9:10 to 9:15 | 0 | |
| 9:15 to 9:20 | 0 | |
| 9:20 to 9:25 | 0 | |
| 9:25 to 9:30 | 0 | |
| MAX | 4 | |
| MIN | 0 | |

| PM | North Leg (Quirk St) | |
|----------------|-------------------------|--|
| | Lane 1 | |
| 14:30 to 14:35 | 0 | |
| 14:35 to 14:40 | 0 | |
| 14:40 to 14:45 | 0 | |
| 14:45 to 14:50 | 0 | |
| 14:50 to 14:55 | 3 | |
| 14:55 to 15:00 | 16 | |
| 15:00 to 15:05 | 10 | |
| 15:05 to 15:10 | 17 | |
| 15:10 to 15:15 | 13 | |
| 15:15 to 15:20 | 0 | |
| 15:20 to 15:25 | 2 | |
| 15:25 to 15:30 | 0 | |
| 15:30 to 15:35 | 0 | |
| 15:35 to 15:40 | 0 | |
| 15:40 to 15:45 | 0 | |
| 15:45 to 15:50 | 0 | |
| 15:50 to 15:55 | 0 | |
| 15:55 to 16:00 | 0 | |
| 16:00 to 16:05 | 0 | |
| 16:05 to 16:10 | 0 | |
| 16:10 to 16:15 | 0 | |
| 16:15 to 16:20 | 0 | |
| 16:20 to 16:25 | 0 | |
| 16:25 to 16:30 | 0 | |
| MAX | 17 | |
| MIN | 0 | |

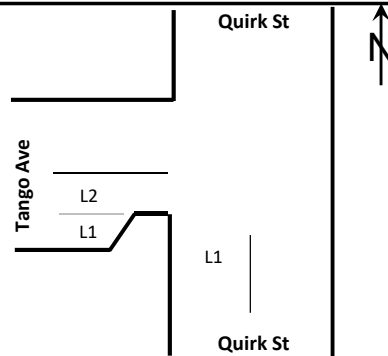
Client TTPP
Location 4. Headland Rd
Date Tues, 9th April 2019
Survey Time 7:30-09:30 & 14:30-16:30 (4hours)
Description Queue Length Surveys



| AM | East Leg (Headland Rd) | |
|--------------|---------------------------|--|
| | Lane 1 | |
| 7:30 to 7:35 | 0 | |
| 7:35 to 7:40 | 0 | |
| 7:40 to 7:45 | 0 | |
| 7:45 to 7:50 | 0 | |
| 7:50 to 7:55 | 0 | |
| 7:55 to 8:00 | 0 | |
| 8:00 to 8:05 | 2 | |
| 8:05 to 8:10 | 0 | |
| 8:10 to 8:15 | 0 | |
| 8:15 to 8:20 | 0 | |
| 8:20 to 8:25 | 1 | |
| 8:25 to 8:30 | 0 | |
| 8:30 to 8:35 | 1 | |
| 8:35 to 8:40 | 0 | |
| 8:40 to 8:45 | 2 | |
| 8:45 to 8:50 | 0 | |
| 8:50 to 8:55 | 0 | |
| 8:55 to 9:00 | 0 | |
| 9:00 to 9:05 | 0 | |
| 9:05 to 9:10 | 0 | |
| 9:10 to 9:15 | 0 | |
| 9:15 to 9:20 | 0 | |
| 9:20 to 9:25 | 0 | |
| 9:25 to 9:30 | 0 | |
| MAX | 0 | |
| MIN | 0 | |

| PM | East Leg (Headland Rd) | |
|----------------|---------------------------|--|
| | Lane 1 | |
| 14:30 to 14:35 | 0 | |
| 14:35 to 14:40 | 0 | |
| 14:40 to 14:45 | 0 | |
| 14:45 to 14:50 | 0 | |
| 14:50 to 14:55 | 0 | |
| 14:55 to 15:00 | 0 | |
| 15:00 to 15:05 | 3 | |
| 15:05 to 15:10 | 6 | |
| 15:10 to 15:15 | 4 | |
| 15:15 to 15:20 | 0 | |
| 15:20 to 15:25 | 0 | |
| 15:25 to 15:30 | 2 | |
| 15:30 to 15:35 | 0 | |
| 15:35 to 15:40 | 0 | |
| 15:40 to 15:45 | 0 | |
| 15:45 to 15:50 | 0 | |
| 15:50 to 15:55 | 0 | |
| 15:55 to 16:00 | 0 | |
| 16:00 to 16:05 | 0 | |
| 16:05 to 16:10 | 0 | |
| 16:10 to 16:15 | 0 | |
| 16:15 to 16:20 | 0 | |
| 16:20 to 16:25 | 0 | |
| 16:25 to 16:30 | 0 | |
| MAX | 6 | |
| MIN | 0 | |

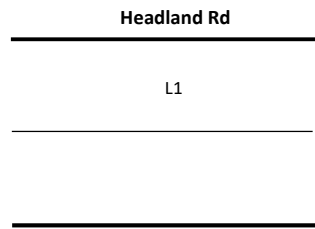
Client TTPP
Location 1. Tango Ave Drop off Zone
Date Wed, 10th April 2019
Survey Time 7:30-09:30 & 14:30-16:30 (4hours)
Description Queue Length Surveys



| AM | South Leg (Quirk St) | | West Leg (Tango Ave) | |
|--------------|-------------------------|--|-------------------------|--------|
| | Lane 1 | | Lane 1 | Lane 2 |
| 7:30 to 7:35 | 0 | | 3 | 0 |
| 7:35 to 7:40 | 0 | | 5 | 0 |
| 7:40 to 7:45 | 0 | | 2 | 0 |
| 7:45 to 7:50 | 0 | | 4 | 0 |
| 7:50 to 7:55 | 0 | | 4 | 0 |
| 7:55 to 8:00 | 0 | | 2 | 0 |
| 8:00 to 8:05 | 0 | | 4 | 0 |
| 8:05 to 8:10 | 0 | | 0 | 0 |
| 8:10 to 8:15 | 0 | | 3 | 0 |
| 8:15 to 8:20 | 0 | | 6 | 0 |
| 8:20 to 8:25 | 0 | | 7 | 0 |
| 8:25 to 8:30 | 0 | | 0 | 0 |
| 8:30 to 8:35 | 0 | | 2 | 0 |
| 8:35 to 8:40 | 0 | | 0 | 0 |
| 8:40 to 8:45 | 0 | | 1 | 0 |
| 8:45 to 8:50 | 0 | | 2 | 0 |
| 8:50 to 8:55 | 0 | | 1 | 0 |
| 8:55 to 9:00 | 0 | | 1 | 0 |
| 9:00 to 9:05 | 0 | | 0 | 0 |
| 9:05 to 9:10 | 0 | | 2 | 0 |
| 9:10 to 9:15 | 0 | | 2 | 0 |
| 9:15 to 9:20 | 0 | | 0 | 0 |
| 9:20 to 9:25 | 0 | | 0 | 0 |
| 9:25 to 9:30 | 0 | | 0 | 0 |
| MAX | 0 | | 7 | 0 |
| MIN | 0 | | 0 | 0 |

| PM | South Leg (Quirk St) | | West Leg (Tango Ave) | |
|----------------|-------------------------|--|-------------------------|--------|
| | Lane 1 | | Lane 1 | Lane 2 |
| 14:30 to 14:35 | 0 | | 0 | 0 |
| 14:35 to 14:40 | 0 | | 0 | 0 |
| 14:40 to 14:45 | 0 | | 0 | 0 |
| 14:45 to 14:50 | 0 | | 5 | 0 |
| 14:50 to 14:55 | 0 | | 0 | 0 |
| 14:55 to 15:00 | 0 | | 8 | 0 |
| 15:00 to 15:05 | 0 | | 7 | 0 |
| 15:05 to 15:10 | 0 | | 9 | 0 |
| 15:10 to 15:15 | 0 | | 7 | 0 |
| 15:15 to 15:20 | 0 | | 0 | 0 |
| 15:20 to 15:25 | 0 | | 5 | 0 |
| 15:25 to 15:30 | 0 | | 3 | 0 |
| 15:30 to 15:35 | 0 | | 0 | 0 |
| 15:35 to 15:40 | 0 | | 0 | 0 |
| 15:40 to 15:45 | 0 | | 0 | 0 |
| 15:45 to 15:50 | 0 | | 0 | 0 |
| 15:50 to 15:55 | 0 | | 0 | 0 |
| 15:55 to 16:00 | 0 | | 0 | 0 |
| 16:00 to 16:05 | 0 | | 0 | 0 |
| 16:05 to 16:10 | 0 | | 1 | 0 |
| 16:10 to 16:15 | 0 | | 1 | 0 |
| 16:15 to 16:20 | 0 | | 5 | 0 |
| 16:20 to 16:25 | 0 | | 6 | 0 |
| 16:25 to 16:30 | 0 | | 0 | 0 |
| MAX | 0 | | 9 | 0 |
| MIN | 0 | | 0 | 0 |

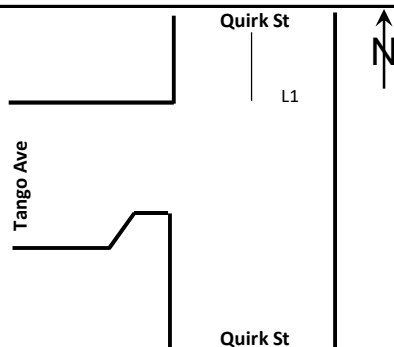
Client TTPP
Location 2. Headland Drop off Zone
Date Wed, 10th April 2019
Survey Time 7:30-09:30 & 14:30-16:30 (4hours)
Description Queue Length Surveys



| AM | Headland Rd | |
|--------------|-------------|--|
| | Lane 1 | |
| 7:30 to 7:35 | 0 | |
| 7:35 to 7:40 | 0 | |
| 7:40 to 7:45 | 0 | |
| 7:45 to 7:50 | 0 | |
| 7:50 to 7:55 | 0 | |
| 7:55 to 8:00 | 0 | |
| 8:00 to 8:05 | 0 | |
| 8:05 to 8:10 | 0 | |
| 8:10 to 8:15 | 0 | |
| 8:15 to 8:20 | 0 | |
| 8:20 to 8:25 | 0 | |
| 8:25 to 8:30 | 0 | |
| 8:30 to 8:35 | 0 | |
| 8:35 to 8:40 | 0 | |
| 8:40 to 8:45 | 0 | |
| 8:45 to 8:50 | 0 | |
| 8:50 to 8:55 | 0 | |
| 8:55 to 9:00 | 0 | |
| 9:00 to 9:05 | 0 | |
| 9:05 to 9:10 | 0 | |
| 9:10 to 9:15 | 0 | |
| 9:15 to 9:20 | 0 | |
| 9:20 to 9:25 | 0 | |
| 9:25 to 9:30 | 0 | |
| MAX | 0 | |
| MIN | 0 | |

| PM | Headland Rd | |
|----------------|-------------|--|
| | Lane 1 | |
| 14:30 to 14:35 | 0 | |
| 14:35 to 14:40 | 0 | |
| 14:40 to 14:45 | 0 | |
| 14:45 to 14:50 | 0 | |
| 14:50 to 14:55 | 0 | |
| 14:55 to 15:00 | 0 | |
| 15:00 to 15:05 | 0 | |
| 15:05 to 15:10 | 0 | |
| 15:10 to 15:15 | 0 | |
| 15:15 to 15:20 | 0 | |
| 15:20 to 15:25 | 0 | |
| 15:25 to 15:30 | 0 | |
| 15:30 to 15:35 | 2 | |
| 15:35 to 15:40 | 0 | |
| 15:40 to 15:45 | 0 | |
| 15:45 to 15:50 | 0 | |
| 15:50 to 15:55 | 0 | |
| 15:55 to 16:00 | 0 | |
| 16:00 to 16:05 | 0 | |
| 16:05 to 16:10 | 0 | |
| 16:10 to 16:15 | 0 | |
| 16:15 to 16:20 | 0 | |
| 16:20 to 16:25 | 0 | |
| 16:25 to 16:30 | 0 | |
| MAX | 2 | |
| MIN | 0 | |

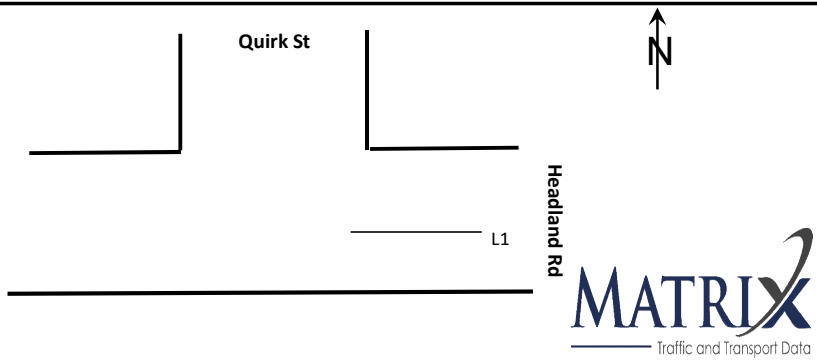
Client TTPP
Location 3. Quirk St
Date Wed, 10th April 2019
Survey Time 7:30-09:30 & 14:30-16:30 (4hours)
Description Queue Length Surveys



| AM | North Leg (Quirk St) | |
|--------------|-------------------------|--|
| | Lane 1 | |
| 7:30 to 7:35 | 0 | |
| 7:35 to 7:40 | 0 | |
| 7:40 to 7:45 | 0 | |
| 7:45 to 7:50 | 0 | |
| 7:50 to 7:55 | 0 | |
| 7:55 to 8:00 | 0 | |
| 8:00 to 8:05 | 0 | |
| 8:05 to 8:10 | 0 | |
| 8:10 to 8:15 | 6 | |
| 8:15 to 8:20 | 0 | |
| 8:20 to 8:25 | 3 | |
| 8:25 to 8:30 | 0 | |
| 8:30 to 8:35 | 0 | |
| 8:35 to 8:40 | 0 | |
| 8:40 to 8:45 | 0 | |
| 8:45 to 8:50 | 0 | |
| 8:50 to 8:55 | 0 | |
| 8:55 to 9:00 | 0 | |
| 9:00 to 9:05 | 0 | |
| 9:05 to 9:10 | 0 | |
| 9:10 to 9:15 | 0 | |
| 9:15 to 9:20 | 0 | |
| 9:20 to 9:25 | 0 | |
| 9:25 to 9:30 | 0 | |
| MAX | 6 | |
| MIN | 0 | |

| PM | North Leg (Quirk St) | |
|----------------|-------------------------|--|
| | Lane 1 | |
| 14:30 to 14:35 | 0 | |
| 14:35 to 14:40 | 0 | |
| 14:40 to 14:45 | 0 | |
| 14:45 to 14:50 | 0 | |
| 14:50 to 14:55 | 0 | |
| 14:55 to 15:00 | 5 | |
| 15:00 to 15:05 | 3 | |
| 15:05 to 15:10 | 10 | |
| 15:10 to 15:15 | 12 | |
| 15:15 to 15:20 | 0 | |
| 15:20 to 15:25 | 0 | |
| 15:25 to 15:30 | 0 | |
| 15:30 to 15:35 | 0 | |
| 15:35 to 15:40 | 0 | |
| 15:40 to 15:45 | 0 | |
| 15:45 to 15:50 | 0 | |
| 15:50 to 15:55 | 0 | |
| 15:55 to 16:00 | 0 | |
| 16:00 to 16:05 | 0 | |
| 16:05 to 16:10 | 0 | |
| 16:10 to 16:15 | 0 | |
| 16:15 to 16:20 | 0 | |
| 16:20 to 16:25 | 0 | |
| 16:25 to 16:30 | 0 | |
| MAX | 12 | |
| MIN | 0 | |

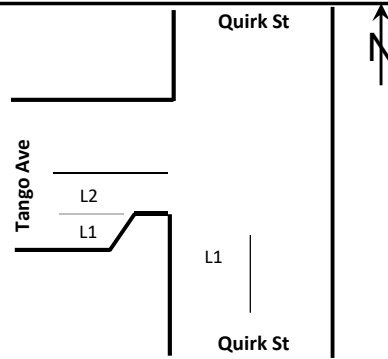
Client TTPP
Location 4. Headland Rd
Date Wed, 10th April 2019
Survey Time 7:30-09:30 & 14:30-16:30 (4hours)
Description Queue Length Surveys



| AM | East Leg (Headland Rd) | |
|--------------|---------------------------|--|
| | Lane 1 | |
| 7:30 to 7:35 | 0 | |
| 7:35 to 7:40 | 0 | |
| 7:40 to 7:45 | 0 | |
| 7:45 to 7:50 | 0 | |
| 7:50 to 7:55 | 0 | |
| 7:55 to 8:00 | 0 | |
| 8:00 to 8:05 | 0 | |
| 8:05 to 8:10 | 0 | |
| 8:10 to 8:15 | 0 | |
| 8:15 to 8:20 | 0 | |
| 8:20 to 8:25 | 0 | |
| 8:25 to 8:30 | 0 | |
| 8:30 to 8:35 | 0 | |
| 8:35 to 8:40 | 0 | |
| 8:40 to 8:45 | 0 | |
| 8:45 to 8:50 | 0 | |
| 8:50 to 8:55 | 0 | |
| 8:55 to 9:00 | 0 | |
| 9:00 to 9:05 | 0 | |
| 9:05 to 9:10 | 0 | |
| 9:10 to 9:15 | 0 | |
| 9:15 to 9:20 | 0 | |
| 9:20 to 9:25 | 0 | |
| 9:25 to 9:30 | 0 | |
| MAX | 0 | |
| MIN | 0 | |

| PM | East Leg (Headland Rd) | |
|----------------|---------------------------|--|
| | Lane 1 | |
| 14:30 to 14:35 | 0 | |
| 14:35 to 14:40 | 0 | |
| 14:40 to 14:45 | 0 | |
| 14:45 to 14:50 | 0 | |
| 14:50 to 14:55 | 0 | |
| 14:55 to 15:00 | 0 | |
| 15:00 to 15:05 | 0 | |
| 15:05 to 15:10 | 0 | |
| 15:10 to 15:15 | 0 | |
| 15:15 to 15:20 | 0 | |
| 15:20 to 15:25 | 0 | |
| 15:25 to 15:30 | 0 | |
| 15:30 to 15:35 | 0 | |
| 15:35 to 15:40 | 0 | |
| 15:40 to 15:45 | 0 | |
| 15:45 to 15:50 | 0 | |
| 15:50 to 15:55 | 0 | |
| 15:55 to 16:00 | 0 | |
| 16:00 to 16:05 | 0 | |
| 16:05 to 16:10 | 0 | |
| 16:10 to 16:15 | 0 | |
| 16:15 to 16:20 | 0 | |
| 16:20 to 16:25 | 0 | |
| 16:25 to 16:30 | 0 | |
| MAX | 0 | |
| MIN | 0 | |

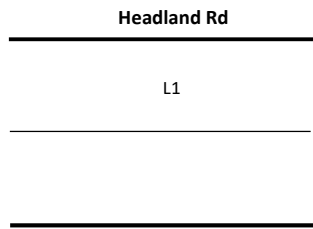
Client TTPP
Location 1. Tango Ave Drop off Zone
Date Thu, 11th April 2019
Survey Time 7:30-09:30 & 14:30-16:30 (4hours)
Description Queue Length Surveys



| AM | South Leg (Quirk St) | | West Leg (Tango Ave) | |
|--------------|-------------------------|--|-------------------------|--------|
| | Lane 1 | | Lane 1 | Lane 2 |
| 7:30 to 7:35 | 0 | | 1 | 0 |
| 7:35 to 7:40 | 0 | | 1 | 0 |
| 7:40 to 7:45 | 0 | | 1 | 0 |
| 7:45 to 7:50 | 0 | | 1 | 0 |
| 7:50 to 7:55 | 0 | | 1 | 0 |
| 7:55 to 8:00 | 0 | | 2 | 0 |
| 8:00 to 8:05 | 0 | | 2 | 0 |
| 8:05 to 8:10 | 3 | | 3 | 0 |
| 8:10 to 8:15 | 3 | | 2 | 0 |
| 8:15 to 8:20 | 5 | | 5 | 0 |
| 8:20 to 8:25 | 6 | | 8 | 0 |
| 8:25 to 8:30 | 4 | | 6 | 0 |
| 8:30 to 8:35 | 0 | | 4 | 0 |
| 8:35 to 8:40 | 0 | | 1 | 0 |
| 8:40 to 8:45 | 0 | | 1 | 0 |
| 8:45 to 8:50 | 0 | | 1 | 0 |
| 8:50 to 8:55 | 0 | | 0 | 0 |
| 8:55 to 9:00 | 0 | | 0 | 0 |
| 9:00 to 9:05 | 0 | | 1 | 0 |
| 9:05 to 9:10 | 0 | | 1 | 0 |
| 9:10 to 9:15 | 0 | | 0 | 0 |
| 9:15 to 9:20 | 0 | | 0 | 0 |
| 9:20 to 9:25 | 0 | | 2 | 0 |
| 9:25 to 9:30 | 0 | | 0 | 0 |
| MAX | 6 | | 8 | 0 |
| MIN | 0 | | 0 | 0 |

| PM | South Leg (Quirk St) | | West Leg (Tango Ave) | |
|----------------|-------------------------|--|-------------------------|--------|
| | Lane 1 | | Lane 1 | Lane 2 |
| 14:30 to 14:35 | 0 | | 0 | 0 |
| 14:35 to 14:40 | 0 | | 0 | 0 |
| 14:40 to 14:45 | 0 | | 1 | 0 |
| 14:45 to 14:50 | 0 | | 1 | 0 |
| 14:50 to 14:55 | 3 | | 2 | 0 |
| 14:55 to 15:00 | 0 | | 4 | 0 |
| 15:00 to 15:05 | 5 | | 3 | 0 |
| 15:05 to 15:10 | 5 | | 5 | 0 |
| 15:10 to 15:15 | 2 | | 5 | 0 |
| 15:15 to 15:20 | 1 | | 2 | 0 |
| 15:20 to 15:25 | 2 | | 4 | 0 |
| 15:25 to 15:30 | 0 | | 4 | 0 |
| 15:30 to 15:35 | 0 | | 2 | 0 |
| 15:35 to 15:40 | 0 | | 1 | 0 |
| 15:40 to 15:45 | 0 | | 0 | 0 |
| 15:45 to 15:50 | 0 | | 1 | 0 |
| 15:50 to 15:55 | 0 | | 0 | 0 |
| 15:55 to 16:00 | 0 | | 1 | 0 |
| 16:00 to 16:05 | 0 | | 1 | 0 |
| 16:05 to 16:10 | 0 | | 0 | 0 |
| 16:10 to 16:15 | 0 | | 2 | 0 |
| 16:15 to 16:20 | 0 | | 1 | 0 |
| 16:20 to 16:25 | 0 | | 1 | 0 |
| 16:25 to 16:30 | 0 | | 1 | 0 |
| MAX | 5 | | 5 | 0 |
| MIN | 0 | | 0 | 0 |

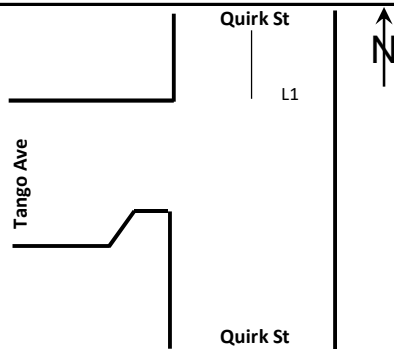
Client TTPP
Location 2. Headland Drop off Zone
Date Thu, 11th April 2019
Survey Time 7:30-09:30 & 14:30-16:30 (4hours)
Description Queue Length Surveys



| AM | Headland Rd | |
|--------------|-------------|--|
| | Lane 1 | |
| 7:30 to 7:35 | 0 | |
| 7:35 to 7:40 | 0 | |
| 7:40 to 7:45 | 0 | |
| 7:45 to 7:50 | 0 | |
| 7:50 to 7:55 | 0 | |
| 7:55 to 8:00 | 0 | |
| 8:00 to 8:05 | 0 | |
| 8:05 to 8:10 | 2 | |
| 8:10 to 8:15 | 0 | |
| 8:15 to 8:20 | 6 | |
| 8:20 to 8:25 | 8 | |
| 8:25 to 8:30 | 0 | |
| 8:30 to 8:35 | 0 | |
| 8:35 to 8:40 | 0 | |
| 8:40 to 8:45 | 0 | |
| 8:45 to 8:50 | 0 | |
| 8:50 to 8:55 | 0 | |
| 8:55 to 9:00 | 0 | |
| 9:00 to 9:05 | 0 | |
| 9:05 to 9:10 | 0 | |
| 9:10 to 9:15 | 0 | |
| 9:15 to 9:20 | 0 | |
| 9:20 to 9:25 | 0 | |
| 9:25 to 9:30 | 0 | |
| MAX | 8 | |
| MIN | 0 | |

| PM | Headland Rd | |
|----------------|-------------|--|
| | Lane 1 | |
| 14:30 to 14:35 | 0 | |
| 14:35 to 14:40 | 1 | |
| 14:40 to 14:45 | 0 | |
| 14:45 to 14:50 | 2 | |
| 14:50 to 14:55 | 0 | |
| 14:55 to 15:00 | 0 | |
| 15:00 to 15:05 | 2 | |
| 15:05 to 15:10 | 0 | |
| 15:10 to 15:15 | 0 | |
| 15:15 to 15:20 | 0 | |
| 15:20 to 15:25 | 2 | |
| 15:25 to 15:30 | 0 | |
| 15:30 to 15:35 | 9 | |
| 15:35 to 15:40 | 0 | |
| 15:40 to 15:45 | 0 | |
| 15:45 to 15:50 | 0 | |
| 15:50 to 15:55 | 0 | |
| 15:55 to 16:00 | 10 | |
| 16:00 to 16:05 | 0 | |
| 16:05 to 16:10 | 0 | |
| 16:10 to 16:15 | 0 | |
| 16:15 to 16:20 | 0 | |
| 16:20 to 16:25 | 0 | |
| 16:25 to 16:30 | 0 | |
| MAX | 10 | |
| MIN | 0 | |

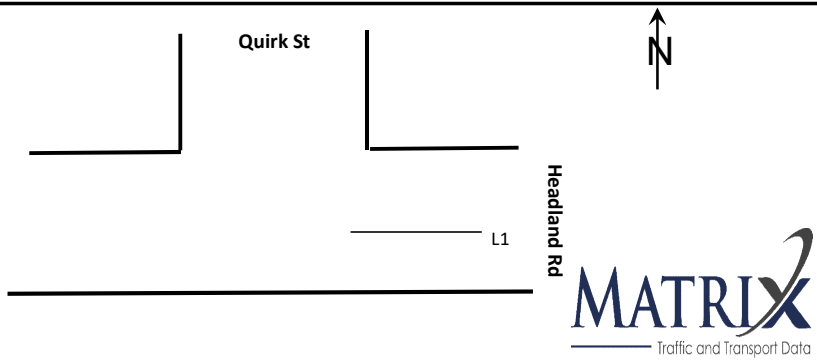
Client TTPP
Location 3. Quirk St
Date Thu, 11th April 2019
Survey Time 7:30-09:30 & 14:30-16:30 (4hours)
Description Queue Length Surveys



| AM | North Leg (Quirk St) | |
|--------------|-------------------------|--|
| | Lane 1 | |
| 7:30 to 7:35 | 0 | |
| 7:35 to 7:40 | 0 | |
| 7:40 to 7:45 | 0 | |
| 7:45 to 7:50 | 0 | |
| 7:50 to 7:55 | 0 | |
| 7:55 to 8:00 | 0 | |
| 8:00 to 8:05 | 0 | |
| 8:05 to 8:10 | 0 | |
| 8:10 to 8:15 | 3 | |
| 8:15 to 8:20 | 4 | |
| 8:20 to 8:25 | 5 | |
| 8:25 to 8:30 | 2 | |
| 8:30 to 8:35 | 0 | |
| 8:35 to 8:40 | 0 | |
| 8:40 to 8:45 | 0 | |
| 8:45 to 8:50 | 0 | |
| 8:50 to 8:55 | 0 | |
| 8:55 to 9:00 | 0 | |
| 9:00 to 9:05 | 0 | |
| 9:05 to 9:10 | 0 | |
| 9:10 to 9:15 | 0 | |
| 9:15 to 9:20 | 0 | |
| 9:20 to 9:25 | 0 | |
| 9:25 to 9:30 | 0 | |
| MAX | 5 | |
| MIN | 0 | |

| PM | North Leg (Quirk St) | |
|----------------|-------------------------|--|
| | Lane 1 | |
| 14:30 to 14:35 | 0 | |
| 14:35 to 14:40 | 0 | |
| 14:40 to 14:45 | 0 | |
| 14:45 to 14:50 | 0 | |
| 14:50 to 14:55 | 0 | |
| 14:55 to 15:00 | 4 | |
| 15:00 to 15:05 | 2 | |
| 15:05 to 15:10 | 12 | |
| 15:10 to 15:15 | 5 | |
| 15:15 to 15:20 | 1 | |
| 15:20 to 15:25 | 0 | |
| 15:25 to 15:30 | 0 | |
| 15:30 to 15:35 | 3 | |
| 15:35 to 15:40 | 0 | |
| 15:40 to 15:45 | 0 | |
| 15:45 to 15:50 | 0 | |
| 15:50 to 15:55 | 0 | |
| 15:55 to 16:00 | 0 | |
| 16:00 to 16:05 | 0 | |
| 16:05 to 16:10 | 0 | |
| 16:10 to 16:15 | 0 | |
| 16:15 to 16:20 | 0 | |
| 16:20 to 16:25 | 0 | |
| 16:25 to 16:30 | 0 | |
| MAX | 12 | |
| MIN | 0 | |

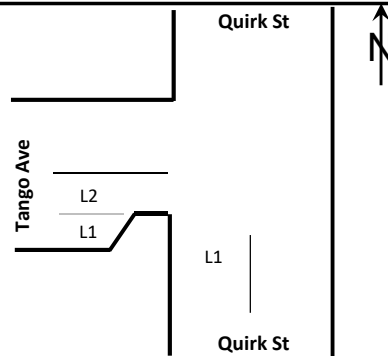
Client TTPP
Location 4. Headland Rd
Date Thurs, 11th April 2019
Survey Time 7:30-09:30 & 14:30-16:30 (4hours)
Description Queue Length Surveys



| AM | East Leg (Headland Rd) | |
|--------------|---------------------------|--|
| | Lane 1 | |
| 7:30 to 7:35 | 0 | |
| 7:35 to 7:40 | 0 | |
| 7:40 to 7:45 | 0 | |
| 7:45 to 7:50 | 0 | |
| 7:50 to 7:55 | 0 | |
| 7:55 to 8:00 | 0 | |
| 8:00 to 8:05 | 0 | |
| 8:05 to 8:10 | 0 | |
| 8:10 to 8:15 | 0 | |
| 8:15 to 8:20 | 0 | |
| 8:20 to 8:25 | 0 | |
| 8:25 to 8:30 | 0 | |
| 8:30 to 8:35 | 0 | |
| 8:35 to 8:40 | 0 | |
| 8:40 to 8:45 | 0 | |
| 8:45 to 8:50 | 0 | |
| 8:50 to 8:55 | 0 | |
| 8:55 to 9:00 | 0 | |
| 9:00 to 9:05 | 0 | |
| 9:05 to 9:10 | 0 | |
| 9:10 to 9:15 | 0 | |
| 9:15 to 9:20 | 0 | |
| 9:20 to 9:25 | 0 | |
| 9:25 to 9:30 | 0 | |
| MAX | 0 | |
| MIN | 0 | |

| PM | East Leg (Headland Rd) | |
|----------------|---------------------------|--|
| | Lane 1 | |
| 14:30 to 14:35 | 0 | |
| 14:35 to 14:40 | 0 | |
| 14:40 to 14:45 | 0 | |
| 14:45 to 14:50 | 0 | |
| 14:50 to 14:55 | 0 | |
| 14:55 to 15:00 | 0 | |
| 15:00 to 15:05 | 0 | |
| 15:05 to 15:10 | 0 | |
| 15:10 to 15:15 | 0 | |
| 15:15 to 15:20 | 0 | |
| 15:20 to 15:25 | 0 | |
| 15:25 to 15:30 | 0 | |
| 15:30 to 15:35 | 0 | |
| 15:35 to 15:40 | 0 | |
| 15:40 to 15:45 | 0 | |
| 15:45 to 15:50 | 0 | |
| 15:50 to 15:55 | 0 | |
| 15:55 to 16:00 | 0 | |
| 16:00 to 16:05 | 0 | |
| 16:05 to 16:10 | 0 | |
| 16:10 to 16:15 | 0 | |
| 16:15 to 16:20 | 0 | |
| 16:20 to 16:25 | 0 | |
| 16:25 to 16:30 | 0 | |
| MAX | 0 | |
| MIN | 0 | |

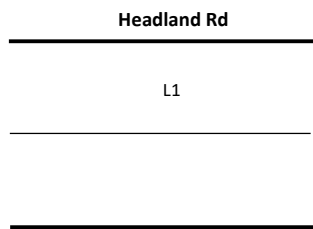
Client TTPP
Location 1. Tango Ave Drop off Zone
Date Fri, 12th April 2019
Survey Time 7:30-09:30 & 14:30-16:30 (4hours)
Description Queue Length Surveys



| AM | South Leg (Quirk St) | | West Leg (Tango Ave) | |
|--------------|-------------------------|--|-------------------------|--------|
| | Lane 1 | | Lane 1 | Lane 2 |
| 7:30 to 7:35 | 0 | | 3 | 0 |
| 7:35 to 7:40 | 0 | | 4 | 0 |
| 7:40 to 7:45 | 0 | | 0 | 0 |
| 7:45 to 7:50 | 0 | | 0 | 0 |
| 7:50 to 7:55 | 0 | | 0 | 0 |
| 7:55 to 8:00 | 0 | | 0 | 0 |
| 8:00 to 8:05 | 0 | | 0 | 0 |
| 8:05 to 8:10 | 0 | | 0 | 0 |
| 8:10 to 8:15 | 3 | | 0 | 0 |
| 8:15 to 8:20 | 4 | | 7 | 0 |
| 8:20 to 8:25 | 4 | | 0 | 0 |
| 8:25 to 8:30 | 4 | | 6 | 0 |
| 8:30 to 8:35 | 0 | | 2 | 0 |
| 8:35 to 8:40 | 0 | | 0 | 0 |
| 8:40 to 8:45 | 0 | | 0 | 0 |
| 8:45 to 8:50 | 0 | | 0 | 0 |
| 8:50 to 8:55 | 0 | | 0 | 0 |
| 8:55 to 9:00 | 0 | | 0 | 0 |
| 9:00 to 9:05 | 0 | | 0 | 0 |
| 9:05 to 9:10 | 0 | | 0 | 0 |
| 9:10 to 9:15 | 0 | | 0 | 0 |
| 9:15 to 9:20 | 0 | | 0 | 0 |
| 9:20 to 9:25 | 0 | | 0 | 0 |
| 9:25 to 9:30 | 0 | | 0 | 0 |
| MAX | 4 | | 7 | 0 |
| MIN | 0 | | 0 | 0 |

| PM | South Leg (Quirk St) | | West Leg (Tango Ave) | |
|----------------|-------------------------|--|-------------------------|--------|
| | Lane 1 | | Lane 1 | Lane 2 |
| 14:30 to 14:35 | 0 | | 0 | 0 |
| 14:35 to 14:40 | 0 | | 0 | 0 |
| 14:40 to 14:45 | 0 | | 0 | 0 |
| 14:45 to 14:50 | 1 | | 0 | 0 |
| 14:50 to 14:55 | 1 | | 6 | 0 |
| 14:55 to 15:00 | 2 | | 7 | 0 |
| 15:00 to 15:05 | 5 | | 5 | 0 |
| 15:05 to 15:10 | 7 | | 8 | 0 |
| 15:10 to 15:15 | 5 | | 7 | 0 |
| 15:15 to 15:20 | 0 | | 11 | 0 |
| 15:20 to 15:25 | 0 | | 7 | 0 |
| 15:25 to 15:30 | 2 | | 0 | 0 |
| 15:30 to 15:35 | 0 | | 0 | 0 |
| 15:35 to 15:40 | 0 | | 0 | 0 |
| 15:40 to 15:45 | 0 | | 0 | 0 |
| 15:45 to 15:50 | 0 | | 0 | 0 |
| 15:50 to 15:55 | 0 | | 0 | 0 |
| 15:55 to 16:00 | 0 | | 0 | 0 |
| 16:00 to 16:05 | 0 | | 0 | 0 |
| 16:05 to 16:10 | 0 | | 0 | 0 |
| 16:10 to 16:15 | 0 | | 0 | 0 |
| 16:15 to 16:20 | 0 | | 0 | 0 |
| 16:20 to 16:25 | 0 | | 0 | 0 |
| 16:25 to 16:30 | 0 | | 0 | 0 |
| MAX | 7 | | 11 | 0 |
| MIN | 0 | | 0 | 0 |

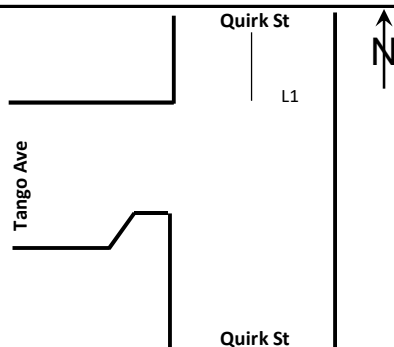
Client TTPP
Location 2. Headland Drop off Zone
Date Fri, 12th April 2019
Survey Time 7:30-09:30 & 14:30-16:30 (4hours)
Description Queue Length Surveys



| AM | Headland Rd | |
|--------------|-------------|--|
| | Lane 1 | |
| 7:30 to 7:35 | 4 | |
| 7:35 to 7:40 | 1 | |
| 7:40 to 7:45 | 1 | |
| 7:45 to 7:50 | 1 | |
| 7:50 to 7:55 | 1 | |
| 7:55 to 8:00 | 1 | |
| 8:00 to 8:05 | 6 | |
| 8:05 to 8:10 | 3 | |
| 8:10 to 8:15 | 1 | |
| 8:15 to 8:20 | 2 | |
| 8:20 to 8:25 | 2 | |
| 8:25 to 8:30 | 4 | |
| 8:30 to 8:35 | 0 | |
| 8:35 to 8:40 | 0 | |
| 8:40 to 8:45 | 1 | |
| 8:45 to 8:50 | 0 | |
| 8:50 to 8:55 | 1 | |
| 8:55 to 9:00 | 1 | |
| 9:00 to 9:05 | 0 | |
| 9:05 to 9:10 | 0 | |
| 9:10 to 9:15 | 1 | |
| 9:15 to 9:20 | 0 | |
| 9:20 to 9:25 | 0 | |
| 9:25 to 9:30 | 0 | |
| MAX | 6 | |
| MIN | 0 | |

| PM | Headland Rd | |
|----------------|-------------|--|
| | Lane 1 | |
| 14:30 to 14:35 | 0 | |
| 14:35 to 14:40 | 0 | |
| 14:40 to 14:45 | 0 | |
| 14:45 to 14:50 | 1 | |
| 14:50 to 14:55 | 0 | |
| 14:55 to 15:00 | 0 | |
| 15:00 to 15:05 | 0 | |
| 15:05 to 15:10 | 0 | |
| 15:10 to 15:15 | 3 | |
| 15:15 to 15:20 | 1 | |
| 15:20 to 15:25 | 0 | |
| 15:25 to 15:30 | 1 | |
| 15:30 to 15:35 | 8 | |
| 15:35 to 15:40 | 1 | |
| 15:40 to 15:45 | 1 | |
| 15:45 to 15:50 | 0 | |
| 15:50 to 15:55 | 0 | |
| 15:55 to 16:00 | 0 | |
| 16:00 to 16:05 | 0 | |
| 16:05 to 16:10 | 0 | |
| 16:10 to 16:15 | 0 | |
| 16:15 to 16:20 | 0 | |
| 16:20 to 16:25 | 0 | |
| 16:25 to 16:30 | 3 | |
| MAX | 8 | |
| MIN | 0 | |

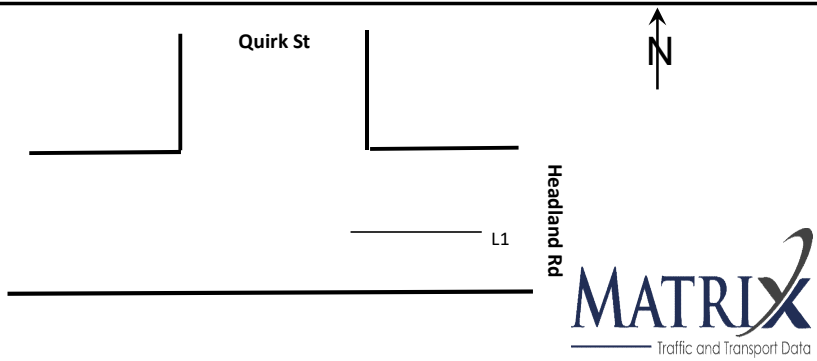
Client TTPP
Location 3. Quirk St
Date Fri, 12th April 2019
Survey Time 7:30-09:30 & 14:30-16:30 (4hours)
Description Queue Length Surveys



| AM | North Leg (Quirk St) | |
|--------------|-------------------------|--|
| | Lane 1 | |
| 7:30 to 7:35 | 0 | |
| 7:35 to 7:40 | 0 | |
| 7:40 to 7:45 | 0 | |
| 7:45 to 7:50 | 0 | |
| 7:50 to 7:55 | 0 | |
| 7:55 to 8:00 | 0 | |
| 8:00 to 8:05 | 0 | |
| 8:05 to 8:10 | 0 | |
| 8:10 to 8:15 | 1 | |
| 8:15 to 8:20 | 3 | |
| 8:20 to 8:25 | 0 | |
| 8:25 to 8:30 | 0 | |
| 8:30 to 8:35 | 0 | |
| 8:35 to 8:40 | 0 | |
| 8:40 to 8:45 | 0 | |
| 8:45 to 8:50 | 0 | |
| 8:50 to 8:55 | 0 | |
| 8:55 to 9:00 | 0 | |
| 9:00 to 9:05 | 0 | |
| 9:05 to 9:10 | 0 | |
| 9:10 to 9:15 | 0 | |
| 9:15 to 9:20 | 0 | |
| 9:20 to 9:25 | 0 | |
| 9:25 to 9:30 | 0 | |
| MAX | 3 | |
| MIN | 0 | |

| PM | North Leg (Quirk St) | |
|----------------|-------------------------|--|
| | Lane 1 | |
| 14:30 to 14:35 | 0 | |
| 14:35 to 14:40 | 0 | |
| 14:40 to 14:45 | 0 | |
| 14:45 to 14:50 | 0 | |
| 14:50 to 14:55 | 0 | |
| 14:55 to 15:00 | 10 | |
| 15:00 to 15:05 | 13 | |
| 15:05 to 15:10 | 15 | |
| 15:10 to 15:15 | 15 | |
| 15:15 to 15:20 | 9 | |
| 15:20 to 15:25 | 0 | |
| 15:25 to 15:30 | 0 | |
| 15:30 to 15:35 | 1 | |
| 15:35 to 15:40 | 0 | |
| 15:40 to 15:45 | 1 | |
| 15:45 to 15:50 | 0 | |
| 15:50 to 15:55 | 0 | |
| 15:55 to 16:00 | 0 | |
| 16:00 to 16:05 | 0 | |
| 16:05 to 16:10 | 0 | |
| 16:10 to 16:15 | 0 | |
| 16:15 to 16:20 | 0 | |
| 16:20 to 16:25 | 0 | |
| 16:25 to 16:30 | 0 | |
| MAX | 15 | |
| MIN | 0 | |

Client TTPP
Location 4. Headland Rd
Date Fri, 12th April 2019
Survey Time 7:30-09:30 & 14:30-16:30 (4hours)
Description Queue Length Surveys

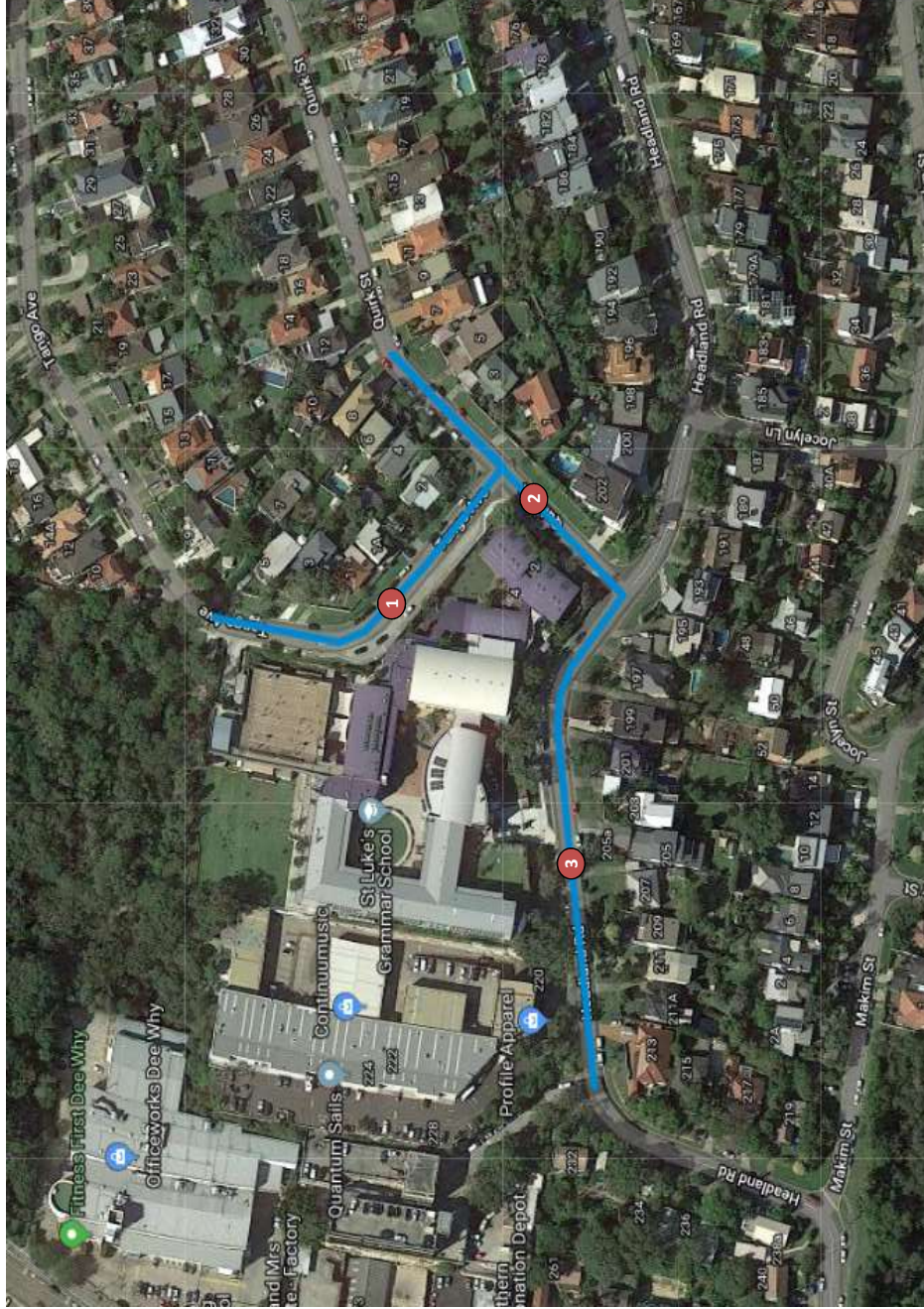


| AM | East Leg (Headland Rd) | |
|--------------|---------------------------|--|
| | Lane 1 | |
| 7:30 to 7:35 | 0 | |
| 7:35 to 7:40 | 0 | |
| 7:40 to 7:45 | 0 | |
| 7:45 to 7:50 | 0 | |
| 7:50 to 7:55 | 0 | |
| 7:55 to 8:00 | 0 | |
| 8:00 to 8:05 | 0 | |
| 8:05 to 8:10 | 0 | |
| 8:10 to 8:15 | 0 | |
| 8:15 to 8:20 | 0 | |
| 8:20 to 8:25 | 0 | |
| 8:25 to 8:30 | 0 | |
| 8:30 to 8:35 | 0 | |
| 8:35 to 8:40 | 0 | |
| 8:40 to 8:45 | 0 | |
| 8:45 to 8:50 | 0 | |
| 8:50 to 8:55 | 0 | |
| 8:55 to 9:00 | 0 | |
| 9:00 to 9:05 | 0 | |
| 9:05 to 9:10 | 0 | |
| 9:10 to 9:15 | 0 | |
| 9:15 to 9:20 | 0 | |
| 9:20 to 9:25 | 0 | |
| 9:25 to 9:30 | 0 | |
| MAX | 0 | |
| MIN | 0 | |

| PM | East Leg (Headland Rd) | |
|----------------|---------------------------|--|
| | Lane 1 | |
| 14:30 to 14:35 | 0 | |
| 14:35 to 14:40 | 0 | |
| 14:40 to 14:45 | 0 | |
| 14:45 to 14:50 | 0 | |
| 14:50 to 14:55 | 0 | |
| 14:55 to 15:00 | 0 | |
| 15:00 to 15:05 | 2 | |
| 15:05 to 15:10 | 0 | |
| 15:10 to 15:15 | 1 | |
| 15:15 to 15:20 | 0 | |
| 15:20 to 15:25 | 0 | |
| 15:25 to 15:30 | 0 | |
| 15:30 to 15:35 | 0 | |
| 15:35 to 15:40 | 0 | |
| 15:40 to 15:45 | 0 | |
| 15:45 to 15:50 | 0 | |
| 15:50 to 15:55 | 0 | |
| 15:55 to 16:00 | 0 | |
| 16:00 to 16:05 | 0 | |
| 16:05 to 16:10 | 0 | |
| 16:10 to 16:15 | 0 | |
| 16:15 to 16:20 | 0 | |
| 16:20 to 16:25 | 0 | |
| 16:25 to 16:30 | 0 | |
| MAX | 2 | |
| MIN | 0 | |

[On-Street Parking]

1. Tango Ave
2. Quirk St
3. Headland Rd



| Street | Side | Between | Parking_Restriction | Time_Restrictions | Capacity | 7:30 | 7:45 | 8:00 | 8:15 | 8:30 | 8:45 | 9:00 | 9:15 | 14:30 | 14:45 | 15:00 | 15:15 | 15:30 | 15:45 | 16:00 | 16:15 | |
|----------------|-------|-----------------------------------|---------------------|---|----------|------|------|------|------|------|------|------|------|-------|-------|-------|-------|-------|-------|-------|-------|-----|
| 1. Tango Ave | North | Quirk St & 5 Tango Ave | No Stopping | 3pm - 4pm School days only | 3 | 1 | 1 | 2 | 2 | 0 | 1 | 0 | 0 | 0 | 0 | 0 | 0 | 0 | 0 | 0 | 0 | |
| | | | Bus Zone | | 9 | 7 | 7 | 8 | 9 | 7 | 7 | 6 | 5 | 8 | 7 | 4 | 6 | 1 | 6 | 5 | 5 | |
| | | | No Restriction | | | | | | | | | | | | | | | | | | | |
| | South | Quirk St & 5 Tango Ave | No Stopping | 8am - 9:30am & 2:30pm - 4pm School Days | 10 | 1 | 1 | 0 | 0 | 0 | 0 | 0 | 0 | 0 | 0 | 0 | 0 | 0 | 0 | 2 | 7 | |
| | | | No Parking | | | | | | | | | | | | | | | | | | | |
| Total | | | | | | | | | | | | | | | | | | | | | | |
| % Capacity | | | | | 22 | 9 | 9 | 10 | 11 | 7 | 8 | 6 | 5 | 8 | 7 | 4 | 6 | 1 | 6 | 7 | 12 | |
| 2. Quirk St | West | Headland Rd & Tango Ave | No Stopping | 8am-9am, 3pm - 4pm School days only | | | | | | | | | | | | | | | | | | |
| | | | Bus Zone | | 2 | 0 | 0 | 0 | 0 | 0 | 0 | 0 | 0 | 0 | 0 | 0 | 0 | 0 | 0 | 0 | 0 | |
| | | | No Stopping | | | | | | | | | | | | | | | | | | | |
| | East | Headland Rd & 9 Quirk St | No Restriction | | 8 | 5 | 5 | 5 | 5 | 5 | 5 | 5 | 5 | 6 | 6 | 4 | 4 | 4 | 3 | 4 | | |
| | | | Bus Zone | 10 | 8 | 8 | 9 | 9 | 7 | 8 | 8 | 7 | 6 | 9 | 6 | 6 | 7 | 7 | 6 | 5 | | |
| Total | | | | | | 1 | 0 | 0 | 0 | 0 | 0 | 0 | 0 | 0 | 0 | 0 | 0 | 0 | 0 | 0 | 0 | |
| % Capacity | | | | | | | | | | 2 | 2 | 2 | 2 | | | | | | | | | |
| 3. Headland Rd | North | 228 Headland Rd & Quirk St | No Stopping | 8am-9am, 3pm - 4pm Mon-Fri | 5 | 4 | 4 | 5 | 2 | 2 | 2 | 2 | 2 | 2 | 4 | 4 | 5 | 3 | 3 | 3 | 3 | |
| | | | No Restriction | | 4 | 3 | 3 | 3 | 2 | 2 | 2 | 2 | 2 | 2 | 3 | 2 | 0 | 0 | 1 | 2 | 0 | |
| | | | Bus Zone | | 5 | 1 | 0 | 1 | 0 | 0 | 0 | 1 | 0 | 0 | 0 | 1 | 1 | 1 | 0 | 0 | 0 | 0 |
| | South | 195 Headland Rd & 213 Headland Rd | No Restriction | | 4 | 4 | 4 | 4 | 4 | 4 | 4 | 4 | 4 | 4 | 4 | 4 | 4 | 4 | 4 | 4 | 3 | |
| | | | No Restriction | 9 | 8 | 7 | 8 | 9 | 9 | 8 | 8 | 8 | 9 | 8 | 8 | 8 | 8 | 8 | 8 | 8 | 7 | 7 |
| Total | | | | | 27 | 20 | 18 | 21 | 17 | 16 | 17 | 16 | 17 | 16 | 18 | 20 | 16 | 15 | 14 | 14 | 14 | |
| % Capacity | | | | | | 74% | 67% | 78% | 63% | 63% | 59% | 63% | 63% | 59% | 67% | 74% | 74% | 59% | 56% | 52% | 52% | 52% |

| Street | Side | Between | Parking_Restriction | Time_Restrictions | Capacity | 7:30 | 7:45 | 8:00 | 8:15 | 8:30 | 8:45 | 9:00 | 9:15 | 14:30 | 14:45 | 15:00 | 15:15 | 15:30 | 15:45 | 16:00 | 16:15 |
|----------------|-------|-----------------------------------|---------------------|---|----------|------|------|------|------|------|------|------|------|-------|-------|-------|-------|-------|-------|-------|-------|
| 1. Tango Ave | North | Quirk St & 5 Tango Ave | No Stopping | 3pm - 4pm School days only | 3 | 2 | 2 | 2 | 2 | 2 | 2 | 2 | 2 | 0 | 1 | 0 | 0 | 0 | 0 | 0 | 0 |
| | | | Bus Zone | | 9 | 7 | 8 | 9 | 8 | 8 | 8 | 8 | 5 | 6 | 6 | 5 | 0 | 3 | 4 | 4 | |
| | | | No Restriction | | | | | | | | | | | | | | | | | | |
| | South | Quirk St & 5 Tango Ave | No Stopping | 8am - 9:30am & 2:30pm - 4pm School Days | 10 | 2 | 0 | 0 | 0 | 0 | 0 | 0 | 0 | 0 | 0 | 0 | 0 | 0 | 0 | 7 | 9 |
| | | | No Parking | | | | | | | | | | | | | | | | | | |
| Total | | | | | 22 | 11 | 10 | 11 | 10 | 10 | 10 | 10 | 10 | 5 | 7 | 6 | 5 | 0 | 3 | 11 | 13 |
| % Capacity | | | | | | 50% | 45% | 50% | 45% | 45% | 45% | 45% | 45% | 23% | 32% | 27% | 23% | 0% | 14% | 50% | 59% |
| 2. Quirk St | West | Headland Rd & Tango Ave | No Stopping | 8am-9am, 3pm - 4pm School days only | 2 | 0 | 0 | 0 | 0 | 0 | 0 | 0 | 0 | 0 | 0 | 0 | 0 | 0 | 0 | 0 | 0 |
| | | | Bus Zone | | | | | | | | | | | | | | | | | | |
| | | | No Stopping | | 8 | 3 | 4 | 5 | 5 | 5 | 5 | 5 | 4 | 4 | 5 | 5 | 4 | 3 | 3 | 7 | |
| | East | Headland Rd & 9 Quirk St | No Restriction | 10 | 8 | 8 | 9 | 9 | 10 | 10 | 10 | 11 | 9 | 8 | 8 | 7 | 5 | 6 | 5 | | |
| | | | Bus Zone | 1 | 0 | 0 | 0 | 0 | 0 | 0 | 0 | 0 | 0 | 0 | 0 | 0 | 0 | 0 | 0 | 0 | |
| Total | | | | | 21 | 11 | 12 | 14 | 14 | 14 | 16 | 16 | 16 | 13 | 12 | 13 | 13 | 11 | 8 | 9 | 12 |
| % Capacity | | | | | | 52% | 57% | 67% | 67% | 67% | 76% | 76% | 76% | 62% | 57% | 63% | 62% | 62% | 38% | 43% | 57% |
| 3. Headland Rd | North | 228 Headland Rd & Quirk St | No Stopping | 8am-9am, 3pm - 4pm Mon-Fri 8am-9am, 3pm - 4pm School days only | 5 | 3 | 3 | 5 | 4 | 2 | 3 | 4 | 3 | 3 | 3 | 3 | 5 | 2 | 3 | 2 | 2 |
| | | | No Restriction | | 4 | 0 | 0 | 0 | 1 | 0 | 0 | 0 | 0 | 0 | 0 | 0 | 3 | 0 | 0 | 1 | |
| | | | Bus Zone | | 5 | 0 | 0 | 1 | 0 | 1 | 2 | 0 | 1 | 0 | 0 | 2 | 0 | 1 | 0 | 0 | |
| | South | 195 Headland Rd & 213 Headland Rd | No Restriction | 4 | 4 | 4 | 4 | 4 | 4 | 4 | 4 | 4 | 4 | 4 | 4 | 4 | 4 | 4 | 4 | 4 | 4 |
| | | | No Stopping | 9 | 4 | 4 | 4 | 4 | 6 | 6 | 7 | 8 | 9 | 8 | 8 | 9 | 7 | 8 | 7 | 6 | 8 |
| Total | | | | | 27 | 11 | 11 | 14 | 13 | 15 | 15 | 16 | 16 | 15 | 17 | 21 | 15 | 16 | 13 | 13 | |
| % Capacity | | | | | | 41% | 43% | 52% | 48% | 48% | 56% | 56% | 59% | 59% | 56% | 63% | 78% | 59% | 48% | 48% | 48% |

| Street | Side | Between | Parking_Restriction | Time_Restrictions | Capacity | 7:30 | 7:45 | 8:00 | 8:15 | 8:30 | 8:45 | 9:00 | 9:15 | 14:30 | 14:45 | 15:00 | 15:15 | 15:30 | 15:45 | 16:00 | 16:15 |
|----------------|-------|----------------------------|-----------------------------------|---|----------|------|------|------|------|------|------|------|------|-------|-------|-------|-------|-------|-------|-------|-------|
| 1. Tango Ave | North | Quirk St & 5 Tango Ave | No Stopping | 3pm - 4pm School days only | 3 | 0 | 0 | 0 | 0 | 0 | 0 | 0 | 0 | 0 | 0 | 0 | 1 | 0 | 0 | 0 | 0 |
| | | | Bus Zone | | | 5 | 5 | 5 | 6 | 6 | 5 | 5 | 5 | 5 | 3 | 3 | 5 | 4 | 5 | | |
| | | | No Restriction | | | | | | | | | | | | | | | | | | |
| | South | Quirk St & 5 Tango Ave | No Stopping | 8am - 9:30am & 2:30pm - 4pm School Days | 10 | 2 | 2 | 0 | 0 | 0 | 0 | 0 | 0 | 0 | 0 | 0 | 0 | 0 | 0 | 10 | 8 |
| | | | No Stopping | | | | | | | | | | | | | | | | | | |
| | | | No Parking | | | | | | | | | | | | | | | | | | |
| | | | No Parking | | | | | | | | | | | | | | | | | | |
| | | | Total | | 22 | 7 | 7 | 5 | 6 | 6 | 5 | 5 | 5 | 5 | 5 | 5 | 6 | 3 | 5 | 14 | 13 |
| | | | % Capacity | | | 32% | 32% | 23% | 27% | 27% | 23% | 23% | 23% | 23% | 23% | 27% | 40% | 40% | 29% | 64% | 59% |
| 2. Quirk St | West | Headland Rd & Tango Ave | No Stopping | 8am-9am, 3pm - 4pm School days only | 2 | 2 | 2 | 2 | 2 | 2 | 1 | 1 | 1 | 1 | 2 | 1 | 0 | 0 | 0 | 0 | 2 |
| | | | Bus Zone | | | | | | | | | | | | | | | | | | |
| | | | No Stopping | | | 8 | 8 | 8 | 8 | 7 | 5 | 5 | 6 | 4 | 5 | 7 | 5 | 4 | 5 | 5 | 6 |
| | | | Headland Rd & 9 Quirk St | No Restriction | 10 | 9 | 9 | 8 | 9 | 9 | 9 | 8 | 7 | 7 | 7 | 8 | 6 | 6 | 7 | 7 | 7 |
| | | | | Bus Zone | | 1 | 0 | 0 | 0 | 0 | 0 | 0 | 0 | 0 | 0 | 0 | 0 | 0 | 0 | 0 | 0 |
| | | | No Parking | | | | | | | | 1 | | | | | | | | | | |
| | | | No Stopping | | | | | | | | | | | | | | | | | | |
| | | | Total | | 21 | 19 | 19 | 18 | 19 | 18 | 16 | 14 | 14 | 12 | 14 | 16 | 11 | 10 | 12 | 12 | 15 |
| | | | % Capacity | | | 90% | 90% | 86% | 90% | 86% | 76% | 67% | 67% | 57% | 67% | 76% | 52% | 48% | 57% | 73% | 73% |
| 3. Headland Rd | North | 228 Headland Rd & Quirk St | No Stopping | 8am-9am, 3pm - 4pm Mon-Fri | 5 | 4 | 4 | 4 | 4 | 4 | 3 | 4 | 4 | 4 | 3 | 3 | 3 | 3 | 3 | 2 | 2 |
| | | | No Restriction | | | 4 | 0 | 2 | 3 | 2 | 0 | 0 | 0 | 2 | 0 | 0 | 0 | 0 | 0 | 0 | 0 |
| | | | No Parking | | | 5 | 0 | 0 | 1 | 1 | 0 | 1 | 1 | 0 | 0 | 2 | 0 | 0 | 0 | 1 | 1 |
| | | | 195 Headland Rd & 213 Headland Rd | Bus Zone | 4 | 4 | 4 | 4 | 4 | 4 | 4 | 4 | 4 | 4 | 4 | 4 | 4 | 4 | 4 | 4 | 4 |
| | | | | No Restriction | | 4 | 4 | 4 | 4 | 4 | 4 | 4 | 4 | 4 | 4 | 4 | 4 | 4 | 4 | 4 | 4 |
| | | | No Stopping | | 9 | 9 | 5 | 5 | 5 | 5 | 6 | 6 | 6 | 7 | 7 | 7 | 7 | 6 | 6 | 5 | 5 |
| | | | Total | | 27 | 17 | 13 | 16 | 17 | 16 | 13 | 15 | 15 | 17 | 14 | 16 | 14 | 13 | 13 | 13 | 12 |
| | | | % Capacity | | | 63% | 48% | 59% | 63% | 59% | 48% | 56% | 56% | 63% | 52% | 59% | 52% | 48% | 48% | 48% | 44% |

| Street | Side | Between | Parking_Restriction | Time_Restrictions | Capacity | 7:30 | 7:45 | 8:00 | 8:15 | 8:30 | 8:45 | 9:00 | 9:15 | 14:30 | 14:45 | 15:00 | 15:15 | 15:30 | 15:45 | 16:00 | 16:15 |
|----------------|-------|-----------------------------------|---------------------|---|----------|------|------|------|------|------|------|------|------|-------|-------|-------|-------|-------|-------|-------|-------|
| 1. Tango Ave | North | Quirk St & 5 Tango Ave | No Stopping | 3pm - 4pm School days only | 3 | 2 | 1 | 2 | 2 | 2 | 0 | 1 | 1 | 1 | 0 | 1 | 0 | 0 | 0 | 0 | 0 |
| | | | Bus Zone | | 9 | 6 | 8 | 8 | 7 | 7 | 4 | 4 | 5 | 5 | 6 | 6 | 3 | 3 | 2 | 1 | |
| | South | Quirk St & 5 Tango Ave | No Stopping | 8am - 9:30am & 2:30pm - 4pm School Days | 10 | 1 | 2 | 0 | 0 | 0 | 0 | 0 | 0 | 0 | 0 | 0 | 0 | 0 | 0 | 6 | 2 |
| | | | No Parking | | | | | | | | | | | | | | | | | | |
| | | | No Stopping | | | | | | | | | | | | | | | | | | |
| Total | | | | | 22 | 9 | 11 | 10 | 9 | 9 | 4 | 5 | 6 | 6 | 7 | 6 | 3 | 3 | 8 | 3 | |
| % Capacity | | | | | | 41% | 50% | 45% | 41% | 41% | 18% | 25% | 27% | 27% | 27% | 32% | 27% | 14% | 38% | 14% | |
| 2. Quirk St | West | Headland Rd & Tango Ave | No Stopping | 8am-9am, 3pm - 4pm School days only | 2 | 2 | 0 | 0 | 0 | 0 | 0 | 0 | 0 | 0 | 0 | 0 | 0 | 0 | 0 | 0 | 0 |
| | | | Bus Zone | | | | | | | | | | | | | | | | | | |
| | East | Headland Rd & 9 Quirk St | No Stopping | 8 | 5 | 5 | 5 | 5 | 5 | 4 | 4 | 4 | 4 | 5 | 5 | 5 | 3 | 4 | 3 | 3 | |
| | | | No Restriction | 10 | 8 | 8 | 10 | 10 | 10 | 9 | 9 | 9 | 8 | 8 | 8 | 5 | 2 | 2 | 3 | 3 | |
| | | | Bus Zone | 1 | 0 | 0 | 0 | 0 | 0 | 0 | 0 | 0 | 0 | 0 | 0 | 0 | 0 | 0 | 0 | 0 | 0 |
| Total | | | | | 21 | 16 | 13 | 15 | 15 | 16 | 13 | 13 | 13 | 12 | 13 | 13 | 10 | 5 | 6 | 6 | |
| % Capacity | | | | | | 76% | 62% | 71% | 71% | 76% | 62% | 62% | 62% | 57% | 62% | 62% | 48% | 24% | 29% | 29% | |
| 3. Headland Rd | North | 228 Headland Rd & Quirk St | No Stopping | 8am-9am, 3pm - 4pm Mon-Fri | 5 | 2 | 2 | 2 | 5 | 4 | 4 | 5 | 5 | 4 | 3 | 4 | 5 | 4 | 1 | 1 | 1 |
| | | | No Restriction | | 4 | 1 | 0 | 0 | 1 | 0 | 0 | 0 | 0 | 2 | 0 | 0 | 1 | 0 | 0 | 0 | 0 |
| | South | 195 Headland Rd & 213 Headland Rd | No Parking | 5 | 4 | 3 | 1 | 1 | 0 | 1 | 0 | 1 | 0 | 0 | 3 | 0 | 0 | 2 | 0 | 1 | |
| | | | Bus Zone | 4 | 4 | 4 | 4 | 4 | 4 | 4 | 4 | 4 | 3 | 3 | 4 | 4 | 2 | 2 | 2 | 2 | |
| | | | No Restriction | 9 | 5 | 7 | 7 | 9 | 9 | 7 | 10 | 9 | 8 | 8 | 8 | 8 | 8 | 8 | 8 | 6 | 6 |
| Total | | | | | 27 | 16 | 16 | 14 | 20 | 17 | 16 | 19 | 19 | 17 | 14 | 19 | 17 | 15 | 13 | 11 | |
| % Capacity | | | | | | 59% | 59% | 52% | 74% | 63% | 59% | 70% | 70% | 63% | 52% | 70% | 63% | 56% | 48% | 41% | 37% |